

**INDEX AND APPENDICES TO THE BRIEF OF EVIDENCE OF TERENCE STEEDMAN
1 FEBRUARY 2020**

APPENDIX	DESCRIPTION	PAGE REFERENCE
A	Map of the Western and Eastern Side of the Ruahine Ranges showing a number of dotted lines in black which are old walking tracks	1
B	Maps of Awarua 1a and Awarua 1 Blocks	2
C	Map and Index of Landmarks on Awarua 1A and 1 Blocks	3
D	Poutaki and Poporangi Streams	4
E	Map of old Māori Poled Track from Taihape to Heretaunga showing the haerenga of Winiata Te Whaaro and Tihema Keepa Winiata from Taihape to Winiata's Pā site in the southern area of the Whakarara Range	5
F	Contemporary Map showing the same haerenga of Winiata Te Whaaro and Tihema Keepa Winiata from Taihape to Winiata's Pā site in the southern area of the Whakarara Range	6
G	Poutaki Pā	7
H	Whakarara Pā	8
I	Poutaki and Whakarara Pā	9

RECEIVED

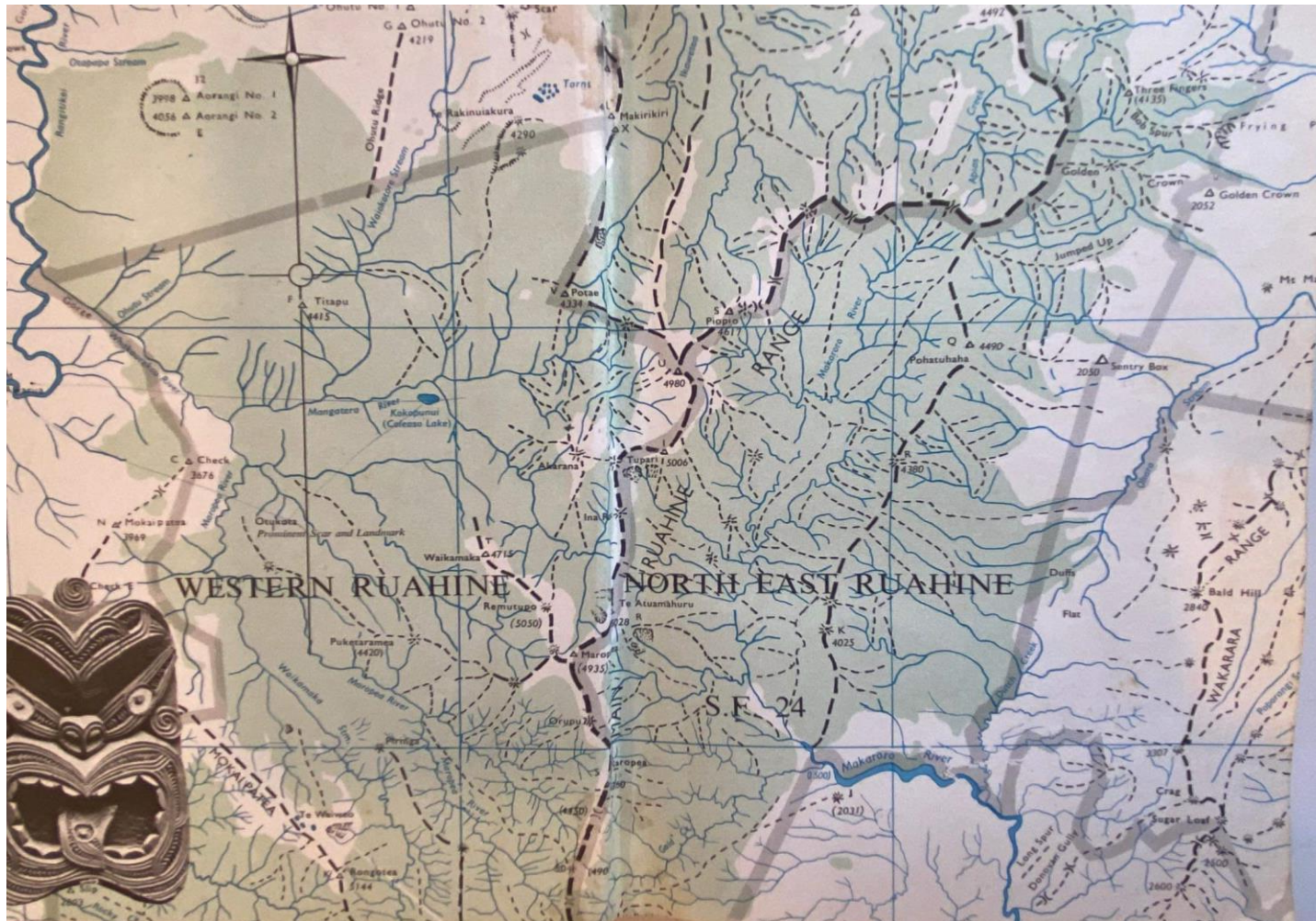
Waitangi Tribunal

3 Feb 2020

Ministry of Justice
WELLINGTON

“A”

Map of the Western and Eastern Side of the Ruahine Ranges showing a number of dotted lines in black which are old walking tracks



“B”

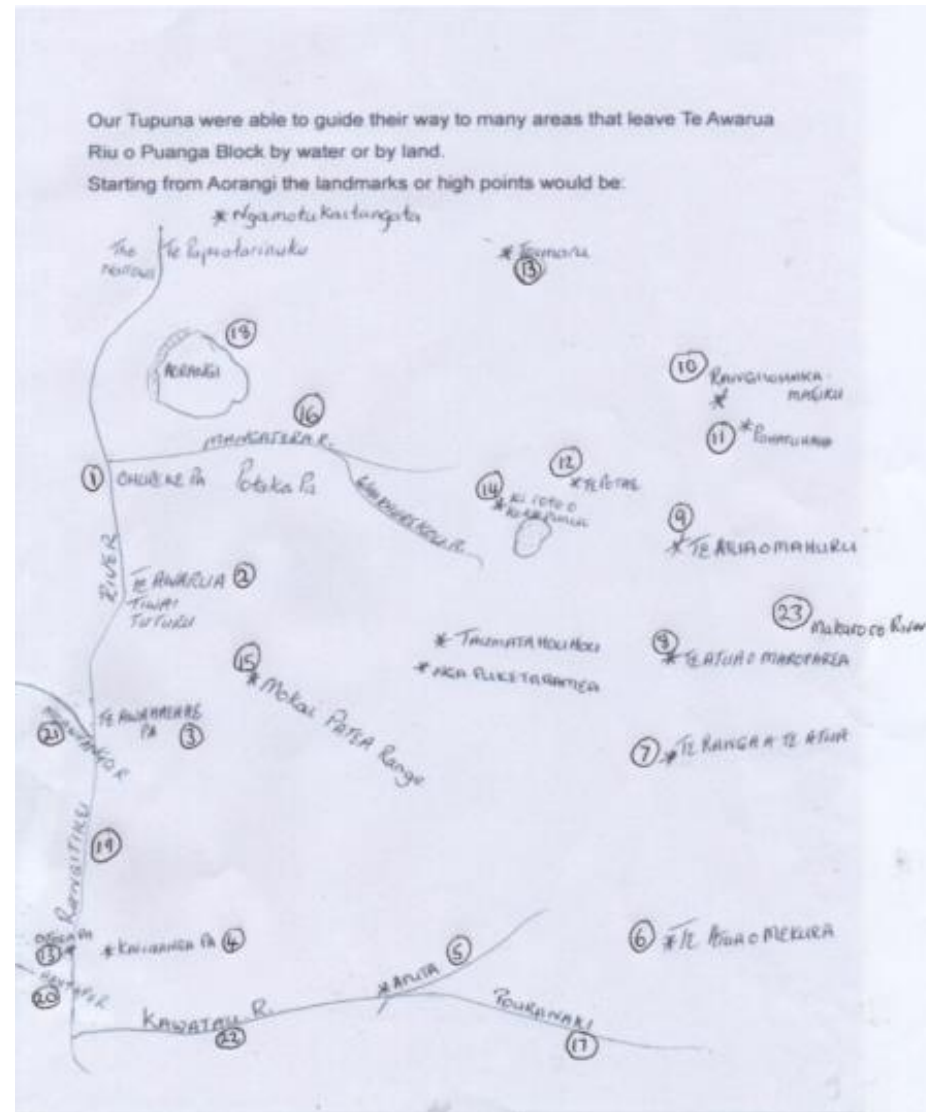
Map of Awarua 1A and Awarua 1 Blocks



“C”

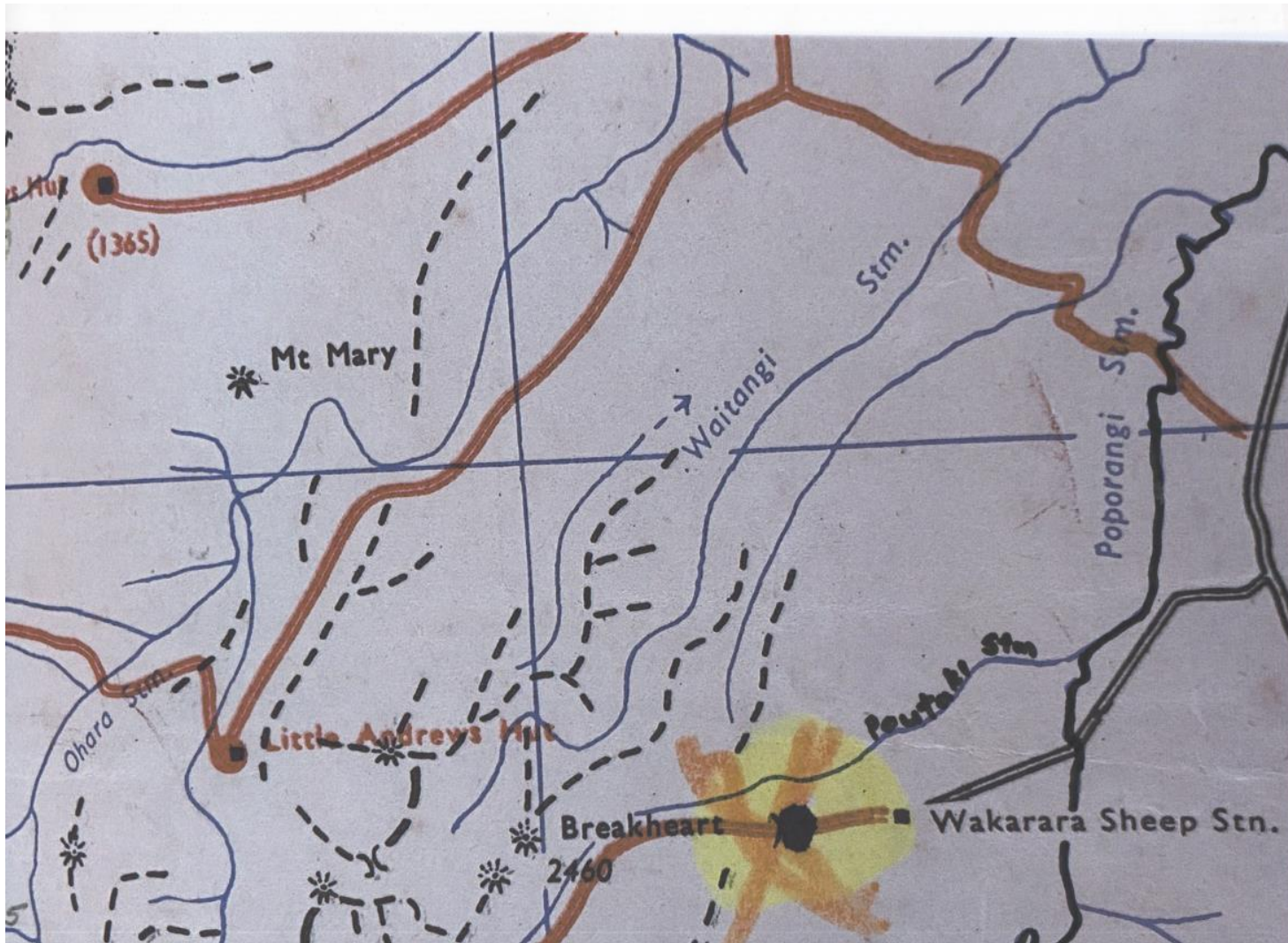
Map and Index of Landmarks on Awarua 1A and 1 Blocks

Index	
1	Ohupeke Pā and Potaka Pā
2	Te Awarua Tiwai Tutaru Pā
3	Te Awahaehae Pā
4	Kaiinanga Pā
5	Aputa Pā
6	Te Atua o Mekura
7	Te Ranga A Te Atua
8	Te Atua o Maroparea
9	Te Atua o Mahuru
10	Rangiwhakamatuku
11	Pohatuhaha
12	Te Potae
13	Otoea Pā
14	Ki roto o Kokopunui
15	Mokai Pātea Range
16	Mangatera River
17	Pouranaki River
18	Aorangi
19	Rangitikei River
20	Hautapu River
21	Moawhango River
22	Kawatau River
23	Makaroro River



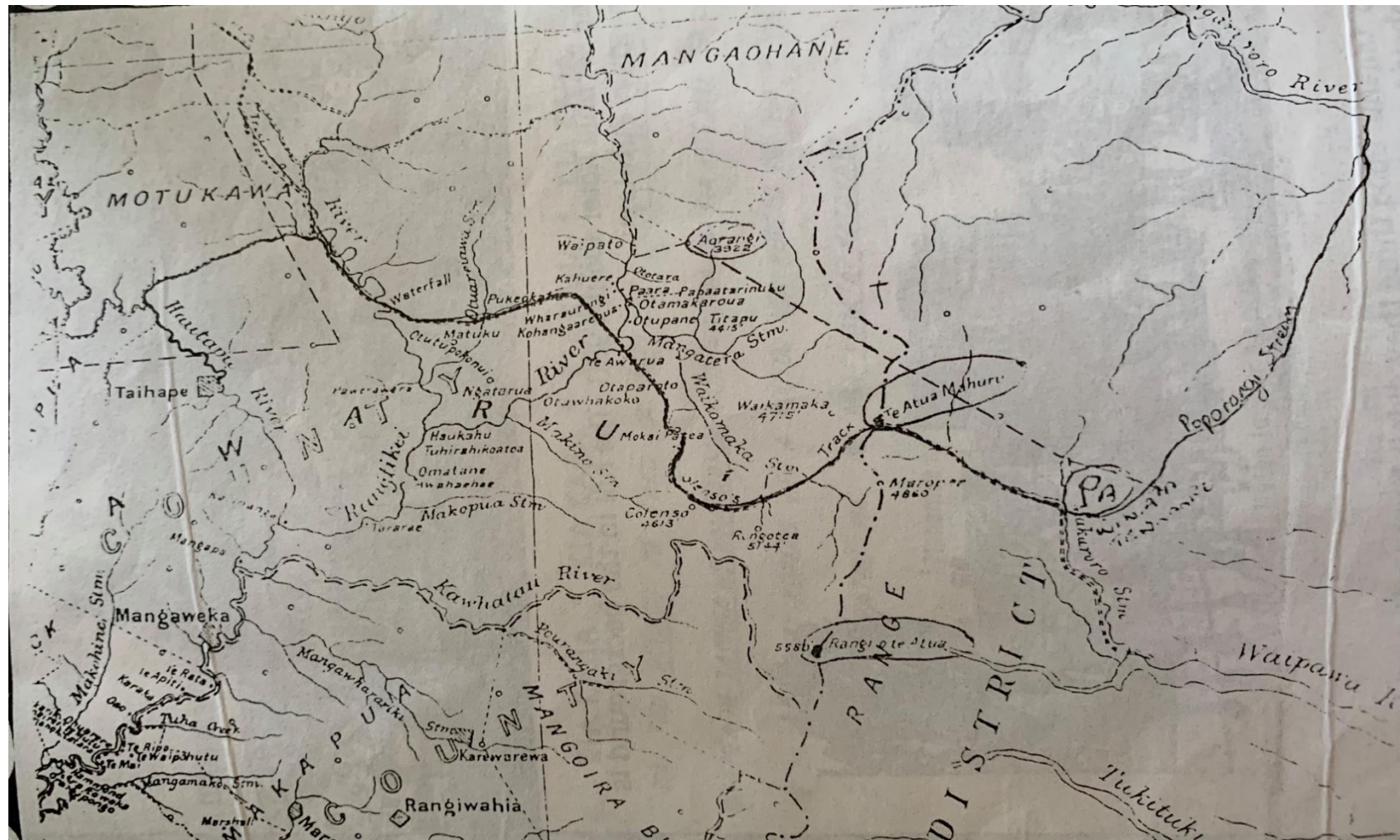
“D”

Poutaki and Poporangi Streams



“E”

Map of old Māori Poled Track from Taihape to Heretaunga showing the haerenga of Winiata Te Whaaro and Tihema Keepa Winiata from Taihape to Winiata's Pā site in the southern area of the Whakarara Range



Contemporary Map showing the same haerenga of Winiata Te Whaaro and Tihema Keepa Winiata from Taihape to Winiata's Pā site in the southern area of the Whakarara Range



“G”

Poutaki Pā



“H”

Whakarara Pā



“|”

Poutaki and Whakarara Pa

