

## Appendix A: Presentation Documents for Generic Submissions in Reply on Issue 15 Defence Takings

Page	Document	Wai 2180 ROI Reference
1	Appendix A to Closing Submissions – Table of all Defence Takings	#3.3.47(a)
2	Major Hibbs Index to Exhibits	#M2(a).
3	Major Hibbs, PH1 Map showing Defence Area	#M2(a), 1.
4	Major Hibbs, PH2 Map showing danger areas associated with live firing ranges	#M2(a), 2.
5	Major Hibbs, PH3 Map showing firing templates	#M2(a), 3.
6	Major Hibbs, PH4 Current record of known blinds and their general location	#M2(a), 4.
7	Innes, Defence Takings. Map 11, Also Plate 119 CFRT Inquiry Mapbook.	#A15, 117 also #A55, 119.
8	Walzl, Map 4, Land Use Capability (LUC) Map,	#A46, 45
9	Innes, Map 6 LUC showing Inquiry District	#A15, 35
10	Innes, Map 7 Land Slope	#A15, 37.
11	Innes, Map 8 Land Cover Database	#A15, 41.
12	Innes, Map 9 Environmental Limiting factors	#A15, 45.
13	Innes, Map 10 Erosion Susceptibility	#A15, 47.
14	Innes, Map A-7 Ōruamatua Kaimanawa Block showing LUC	#15, 61.
15	Fisher & Stirling, Ōruamatua Kaimanawa Leases	#A6, 156.
16	Fisher & Stirling, Ōruamatua Kaimanawa, showing all blocks, remaining Māori land	#A6, 172.
17	Woodley, Ōruamatua Kaimanawa Block showing sub-blocks and Defence Area	#A37, 505.

RECEIVED

Waitangi Tribunal

27 Sept 2021

Ministry of Justice  
WELLINGTON

Appendix A: Table of Takings for Waiouru Defence Lands

Block Information				Taking Information			Compensation		Additional Notes, Leases, Transfers	Cleaver Reference		
Block	Land Status	Total Block Area	Area Taken (if less)	Date of Taking	Meetings / Consultation	Negotiated Settlement	Valuations	Total				
1939 The First Round of Takings								£55700	£48,813 deducted for amount owed in deferred payment license and land tax arrears Compensation Court Decision		37	
Rangipo Waiu Subdivision 2, Run 1												
Rangipo Waiu Subdivision 3, Run 1												
Rangipo Waiu Subdivision 4, Run 1												
Rangipo Waiu Subdivision 1, Run 3												
Rangipo Waiu Subdivision 1, Run 4												
Rangipo Waiu Subdivision 1, Run 5									This block was offered to the Army after the initial taking in 1939.		1979 1219 h to Kaimanawa Park and 109 h to Tongariro Park	26-27
Rangipo Waiu Subdivision 1, Run 5												
1942									Compensation at Native Land Court Whanganui, no owners present		1979 95h transferred to Kaimanawa Forest Park, 224h transferred to Tongariro National Park (1979)	39-41,45-47
Rangipo Waiu Subdivision 1, Run 1												
Rangipo North 6C Pt							£5		Compensation at Native Land Court Whanganui, no owners present		1979 95h transferred to Kaimanawa Forest Park, 224h transferred to Tongariro National Park (1979)	39-41,45-47
Rangipo Waiu 1B							£5	£250				
1959 The Second Round of Takings												
Oruamatua Kaimanawa 2E							£1600		1961 Partially leased to Ohinewairua Station		1990 25h exchanged with Ohinewairua Station	121
1961												
Oruamatua Kaimanawa 2P							£3800		1961 Wholly leased to Ohinewairua Station		1990 24h exchanged with Ohinewairua Station	61, 74, 121
Oruamatua Kaimanawa 3B									1961 Partially leased to Ohinewairua Station, Station also granted 10 year leases over 10,000 acres of Training Area acquired from Māori the previous year			57-58,
Oruamatua Kaimanawa 2A							360	360				
Oruamatua Kaimanawa 2B1							1200	1200				
Oruamatua Kaimanawa 2B2							400	400				
Oruamatua Kaimanawa 2C1							100	100				
Oruamatua Kaimanawa 2O							975	975	1961 Wholly leased to Ohinewairua Station		1990 434h exchanged with Ohinewairua Station	61, 74, 121
Oruamatua Kaimanawa 2Q1							750	750	1961 Leased to Ohinewairua Station		1990 Part exchanged with Ohinewairua Station 25h across the two blocks.	61, 74, 121
Oruamatua Kaimanawa 2Q2							75	75	1961 Partially leased to Ohinewairua Station			61, 74
Oruamatua Kaimanawa 3A							280	280	1961 Partially leased to Ohinewairua Station			
Oruamatua Kaimanawa 3C							550	550				
Oruamatua Kaimanawa 3D							580	580				
Oruamatua Kaimanawa 3E							2150	2150				
Oruamatua Kaimanawa 3F							1115	1115	1961 Partially leased to Ohinewairua Station			61, 74
Rangipo Waiu 2B1A							45	45	1990 7h transferred to Kaimanawa Forest Park			
Rangipo Waiu 2B1B							40	40				
Rangipo Waiu 2B1C							65	65				
Rangipo Waiu 2B1D							95	95				
Rangipo Waiu 2B1E							50	50				
Rangipo Waiu 2B2							125	125				
Rangipo Waiu 2B3							140	140				
Rangipo Waiu 2B4							80	80				
							£9175					
1973 The Third Round of Takings												
Oruamatua Kaimanawa 1X								92,174	1977	Supreme Court		110-111
Oruamatua Kaimanawa 2C2								unknown	1977	Pennefather believes also assessed in the Supreme Court proceedings		Pennefather (40-41)
Oruamatua Kaimanawa 2C3									1979	Māori Trustee negotiated an agreed settlement for the blocks.	1990 44h exchanged with Ohinewairua Station	110-111
Oruamatua Kaimanawa 2C4							9,500	9,500				
Oruamatua Kaimanawa 4								25,000	1982	Land Valuation Court, plus interest of \$58,950 and costs \$2,253.		110-111

**INDEX TO EXHIBITS****BRIEF OF EVIDENCE OF MAJOR PATRICK HIBBS  
4 March 2019**

<b>Exhibit</b>	<b>Description</b>	<b>Pages</b>
PH1	Map showing location of the Waiouru Military Training Area (WMTA)	1
PH2	Map showing danger areas associated with live firing ranges	2
PH3	Map showing firing templates	3
PH4	Current record of known blinds and their general location	4
PH5	Memo describing the Waiouru lands as being under the mana of Ngāti Tuwharetoa	5

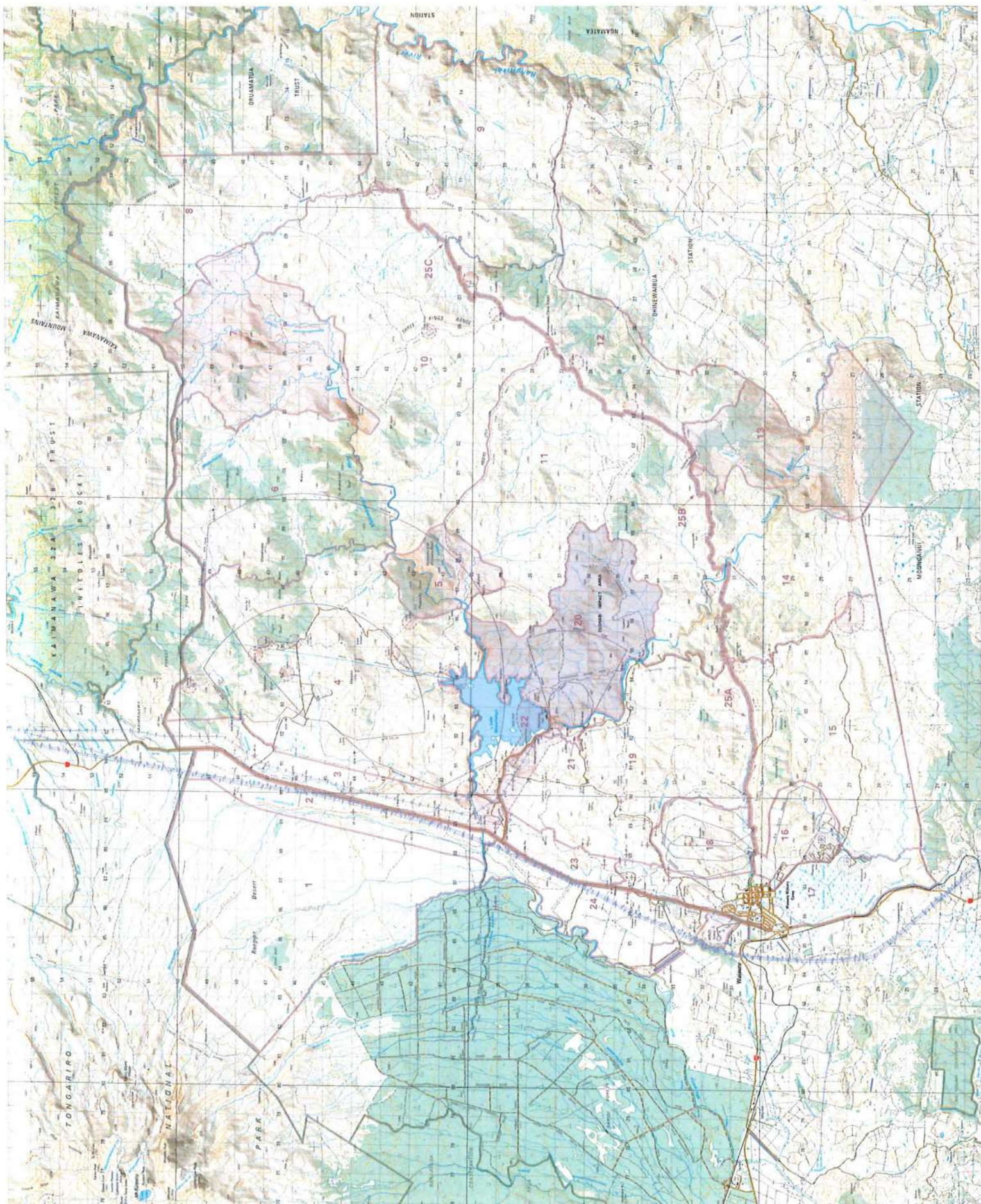
**RECEIVED**

Waitangi Tribunal

**7 March 2019**Ministry of Justice  
WELLINGTON

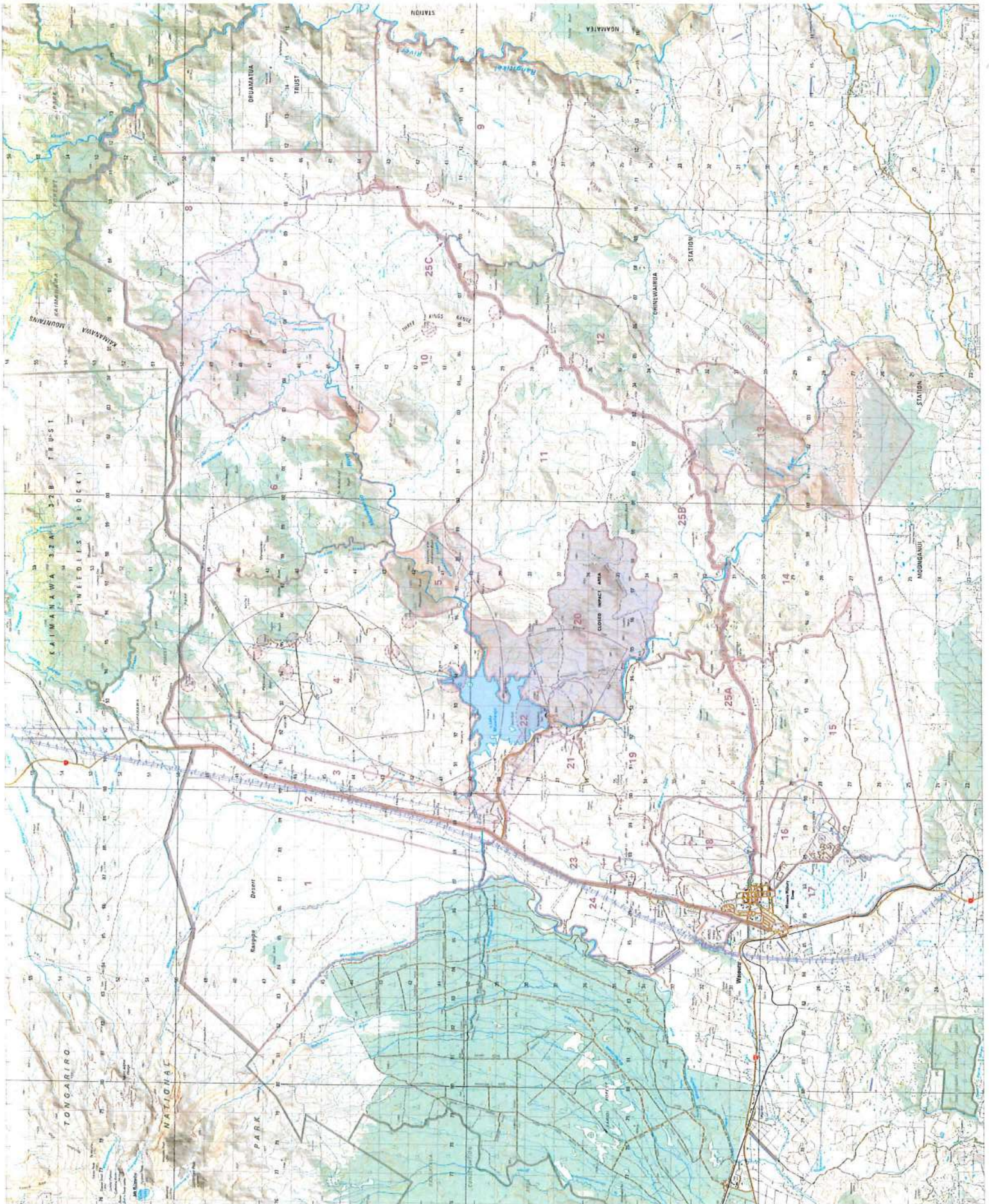


Pjt





Dgt

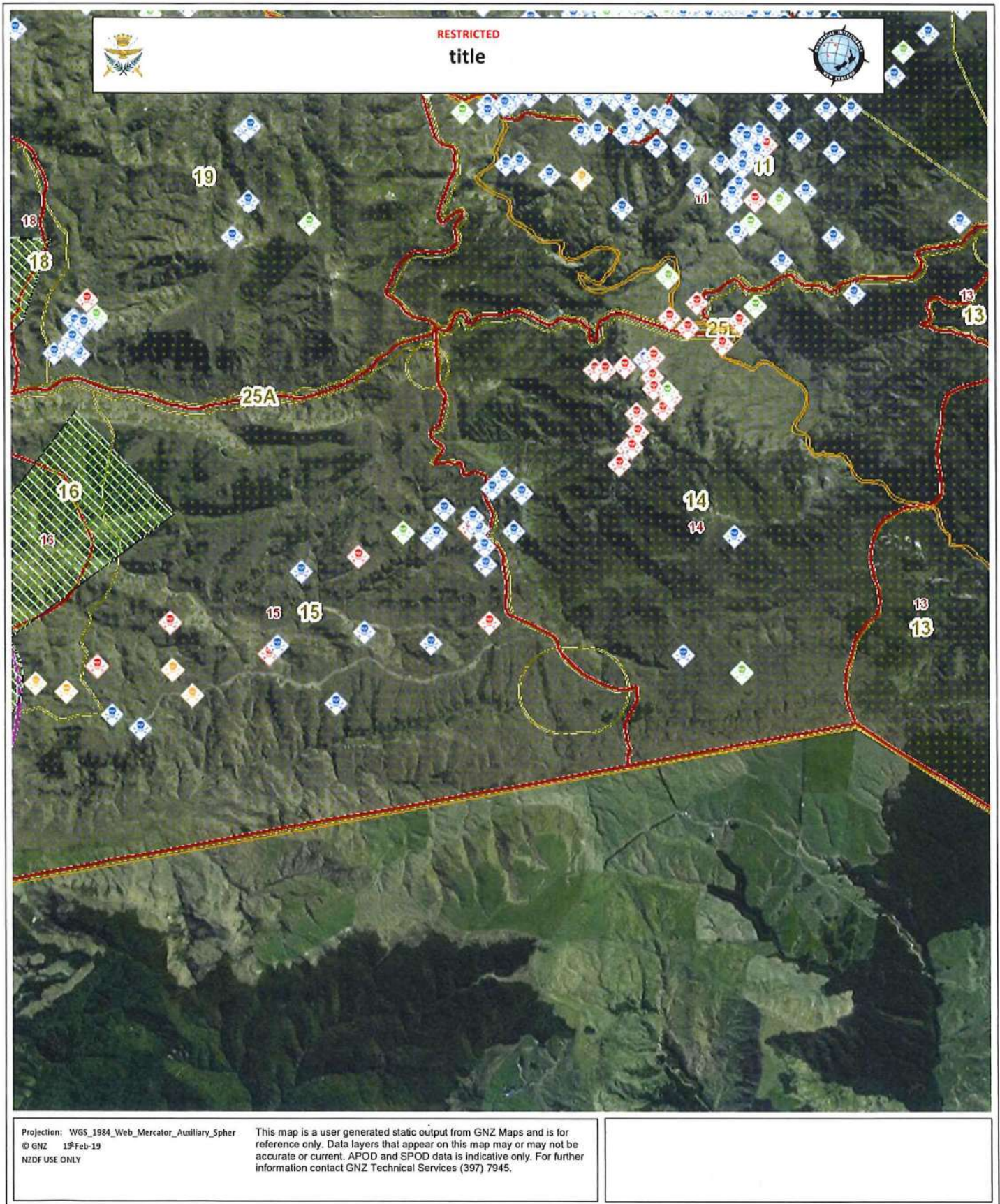




PLD







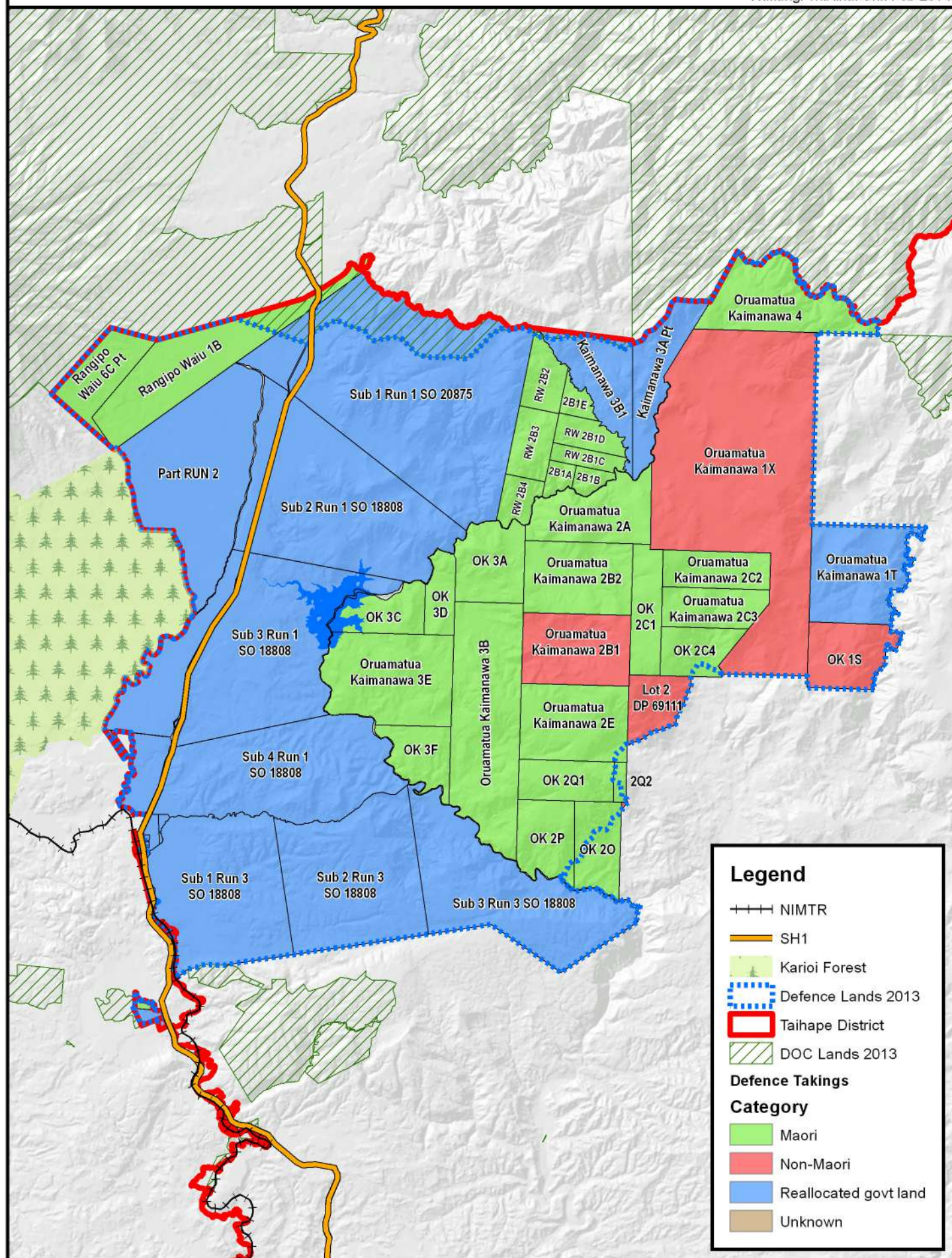


0 2 4 KM

Waitangi Tribunal Unit Feb 2014

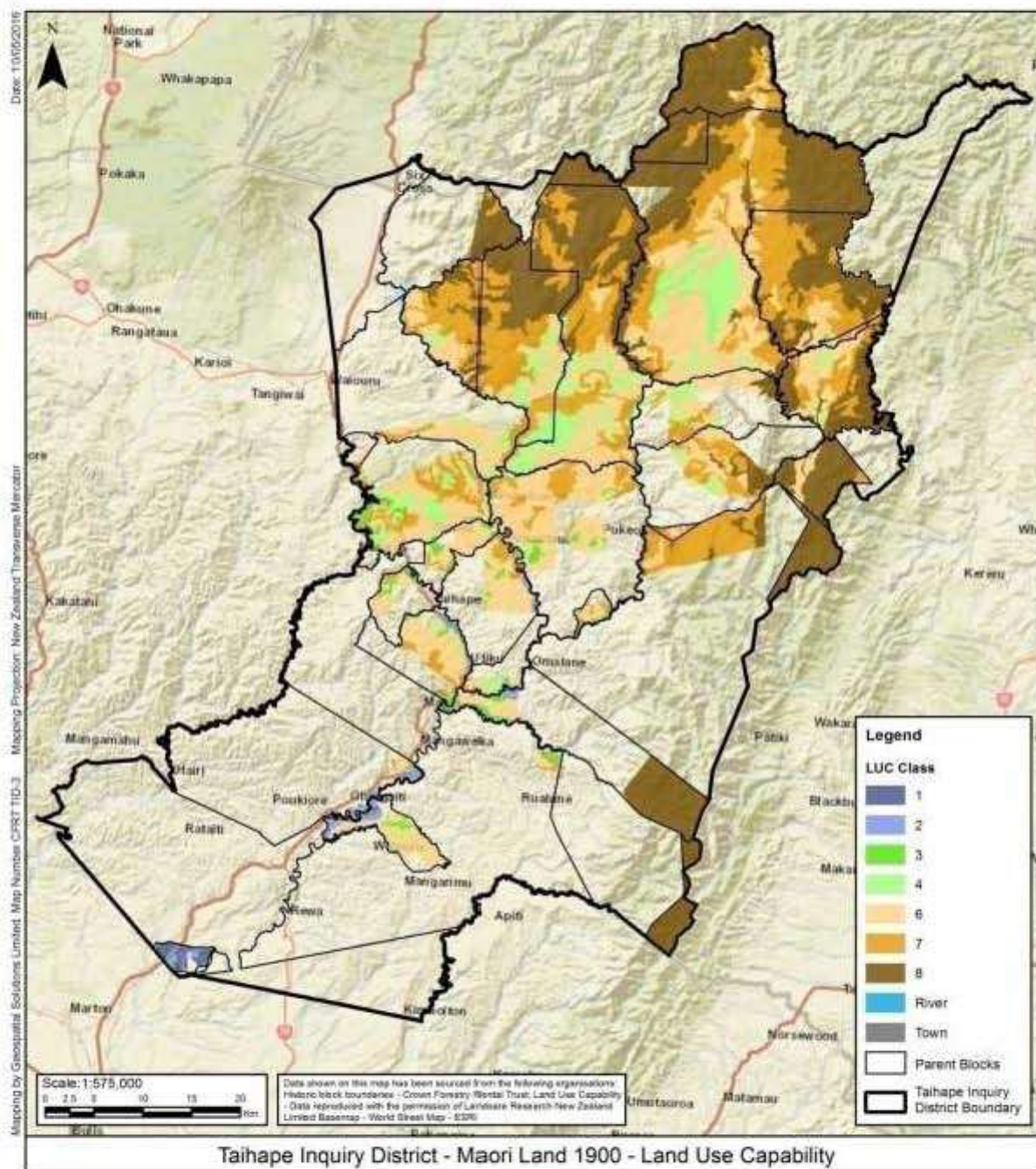
Sources: LINZ and DOC data

Waitangi Tribunal Unit Feb 2014





**Figure 10: LUC classifications of Maori land in the Taihape inquiry district, 1900<sup>618</sup>**



<sup>618</sup> This map is drawn from Walzl's twentieth century overview report. See Walzl, 'Twentieth Century Overview', p45 (Map 4).



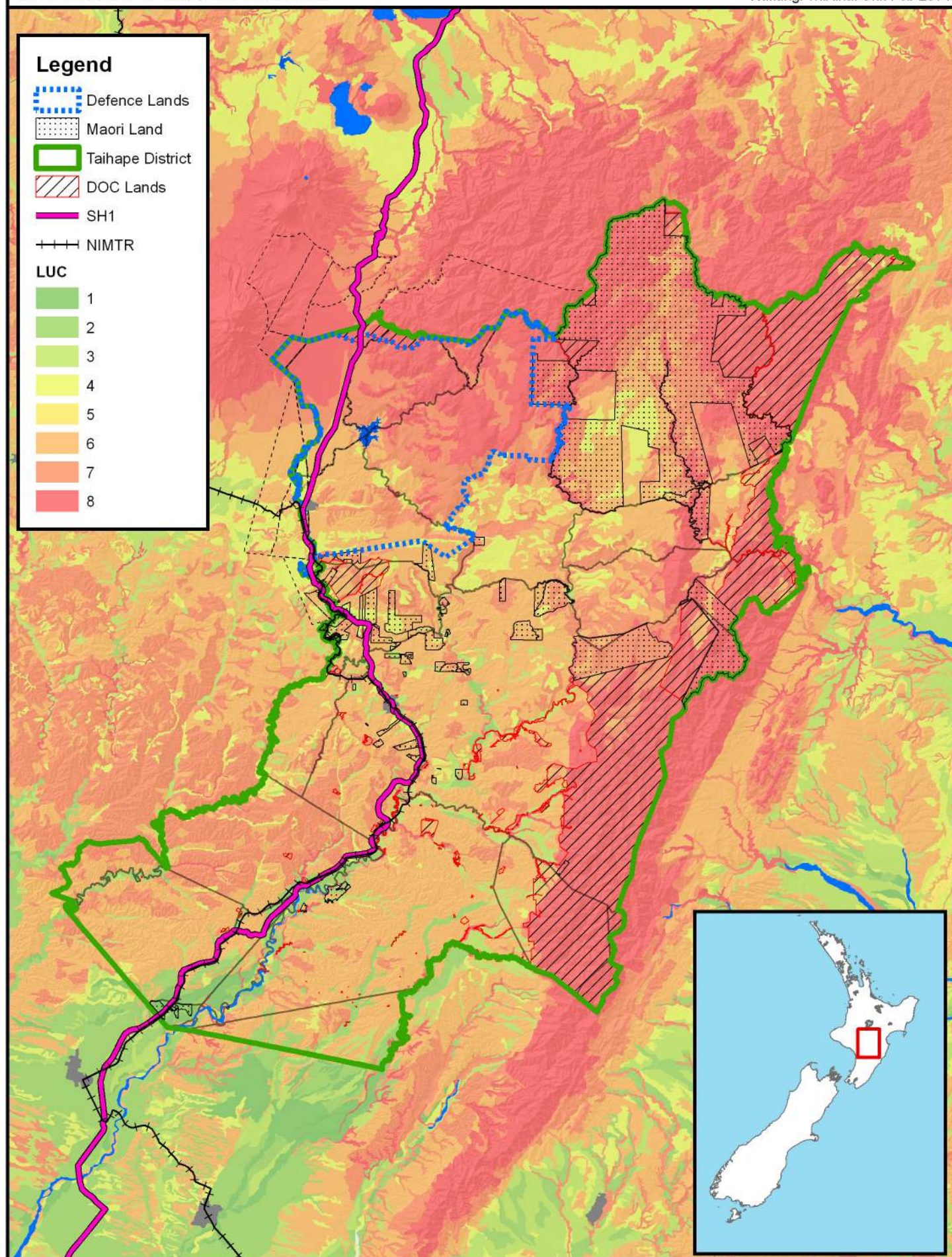
# Land Use Capability (LUC), Taihape District 2013

Sources: Landcare Research, LINZ & MLOL data

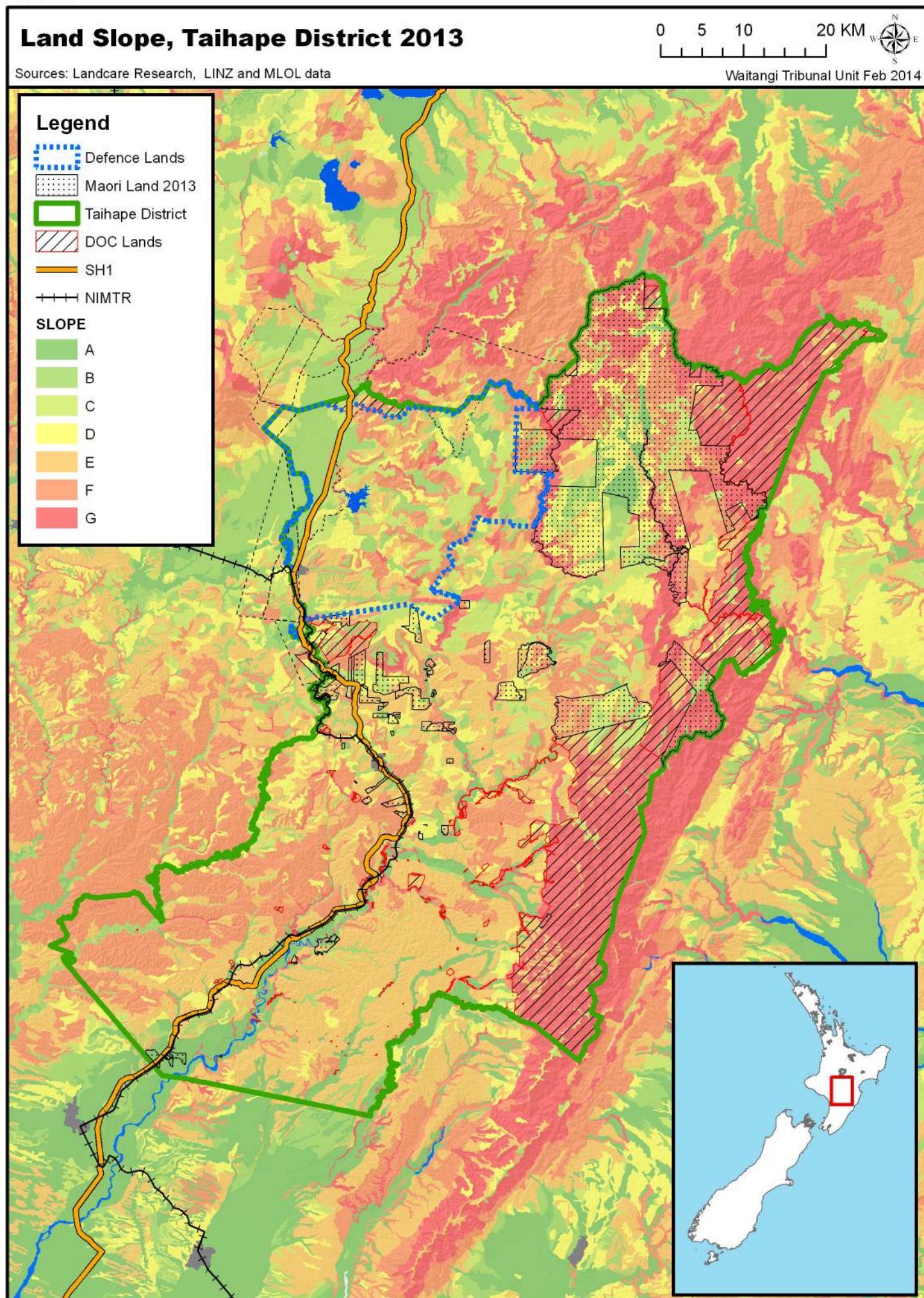
0 3 6 12 KM



Waitangi Tribunal Unit Feb 2014









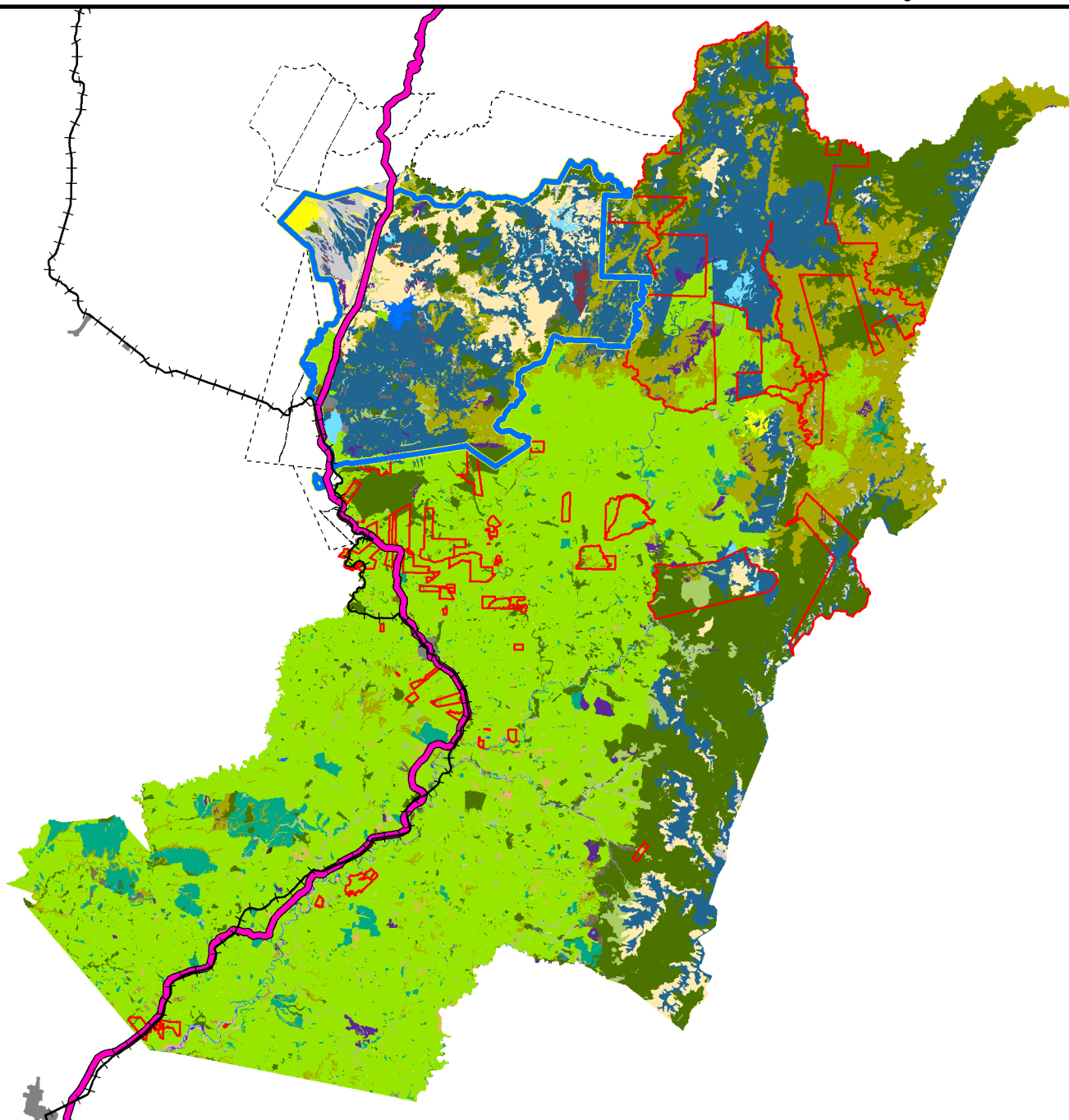
# Land Cover Database (LCDB), Taihape District 2013

0 3 6 12 KM



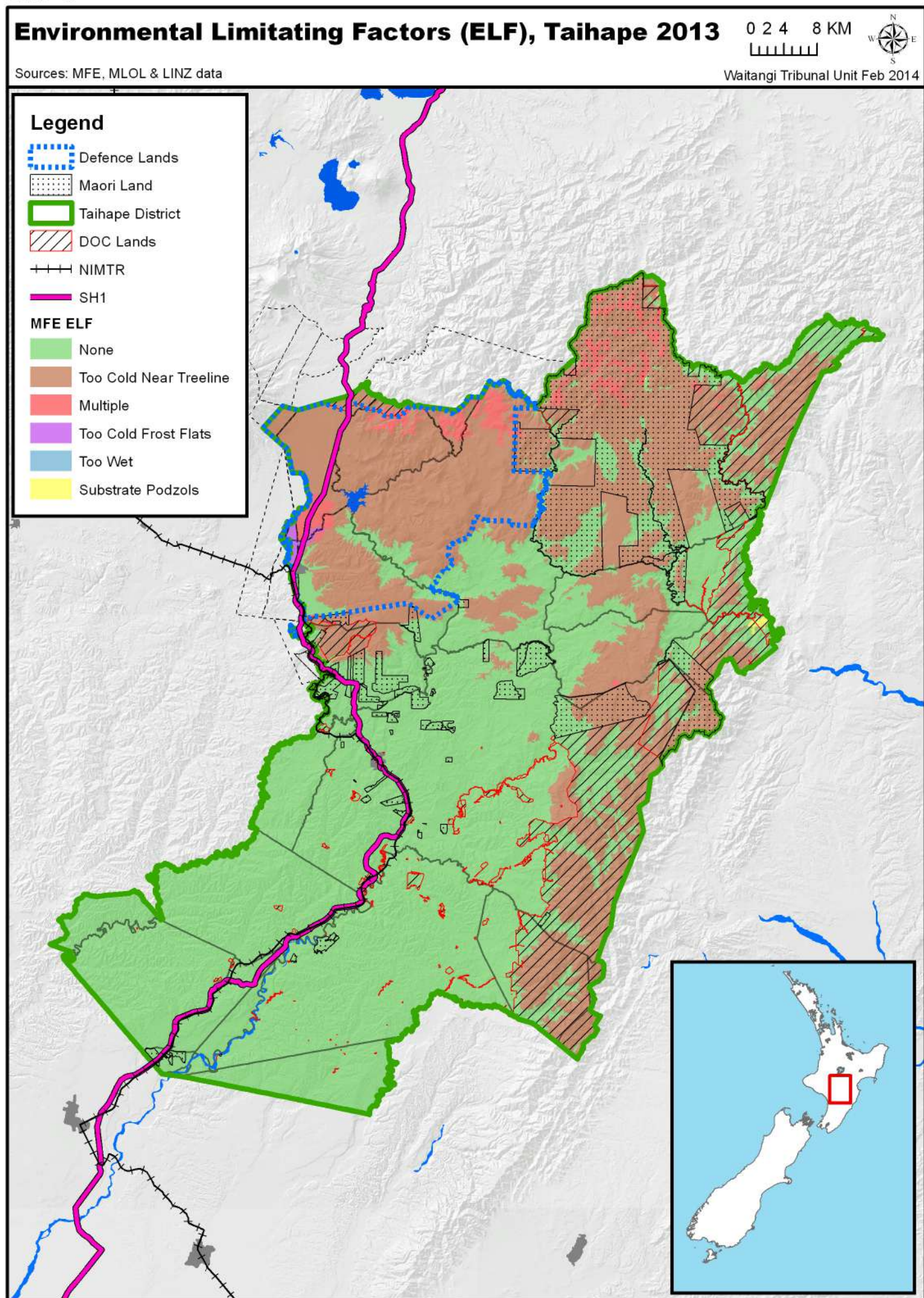
Sources: NZLRI, MLOL & LINZ data

Waitangi Tribunal Unit Feb 2014

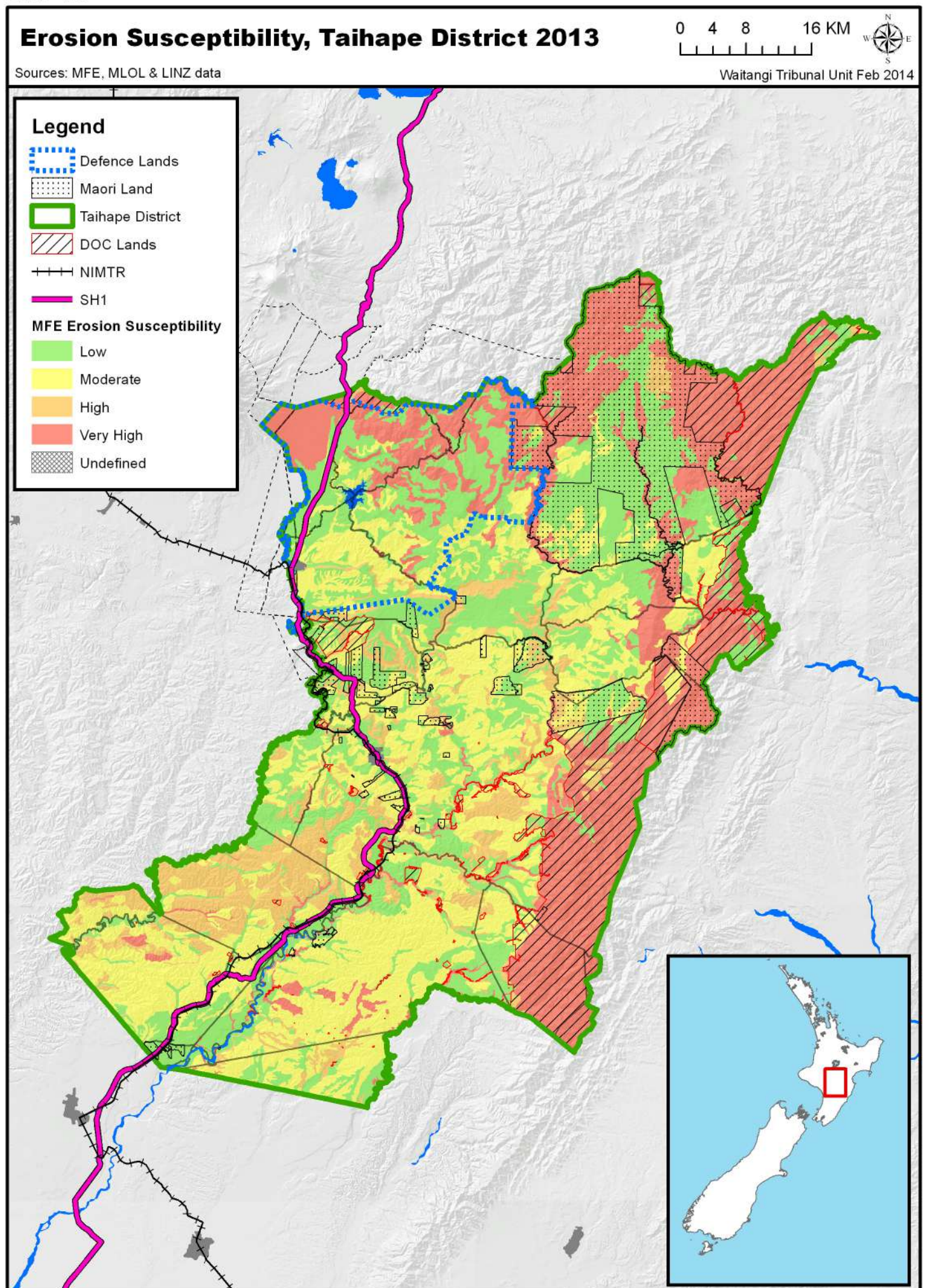


High Producing Exotic Grassland	Herbaceous Freshwater Vegetation	Urban Parkland/Open Space
Indigenous Forest	Depleted Grassland	Fernland
Tall Tussock Grassland	Gorse and/or Broom	Flaxland
Manuka and/or Kanuka	River	Forest - Harvested
Sub Alpine Shrubland	Landslide	Herbaceous Saline Vegetation
Exotic Forest	Lake or Pond	Orchard, Vineyard, Perennial Crop
Broadleaved Indigenous Hardwoods	Matagouri or Grey Scrub	Short-rotation Cropland
Gravel or Rock	Built-up Area (settlement)	Surface Mine or Dump
Low Producing Grassland	Alpine Grass/Herbfield	Transport Infrastructure
Deciduous Hardwoods	Mixed Exotic Shrubland	Defence Lands
		Maori Land

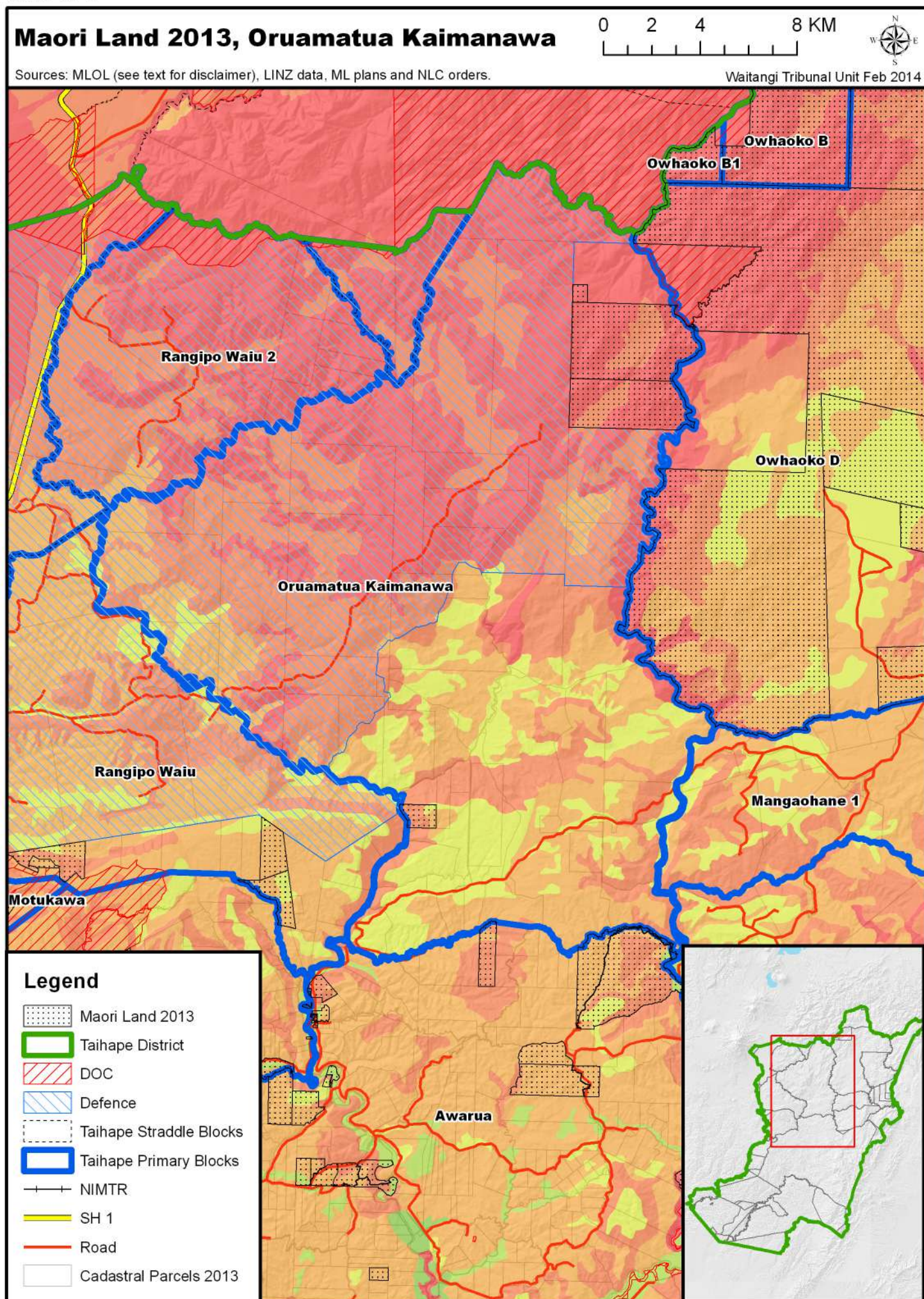




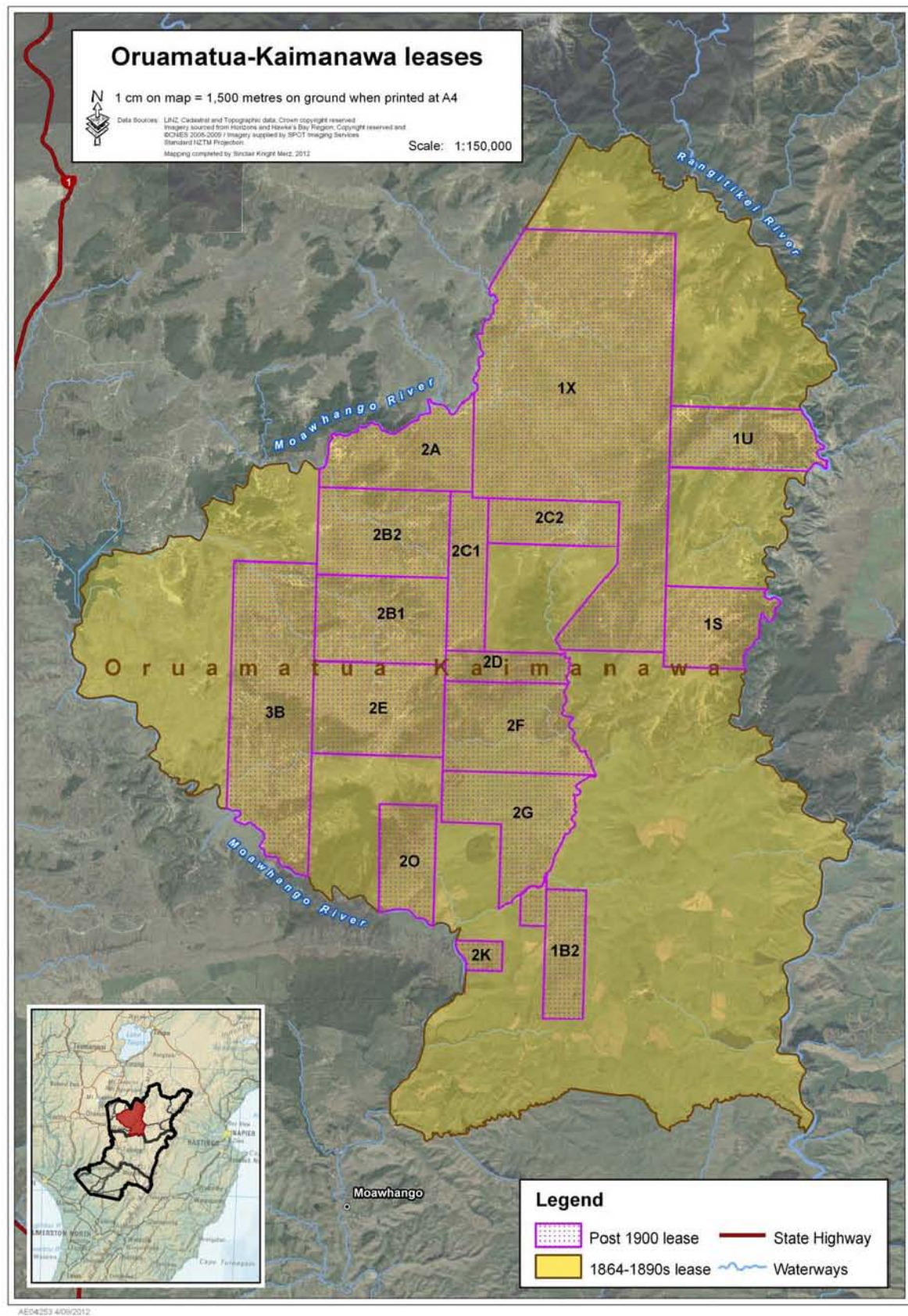






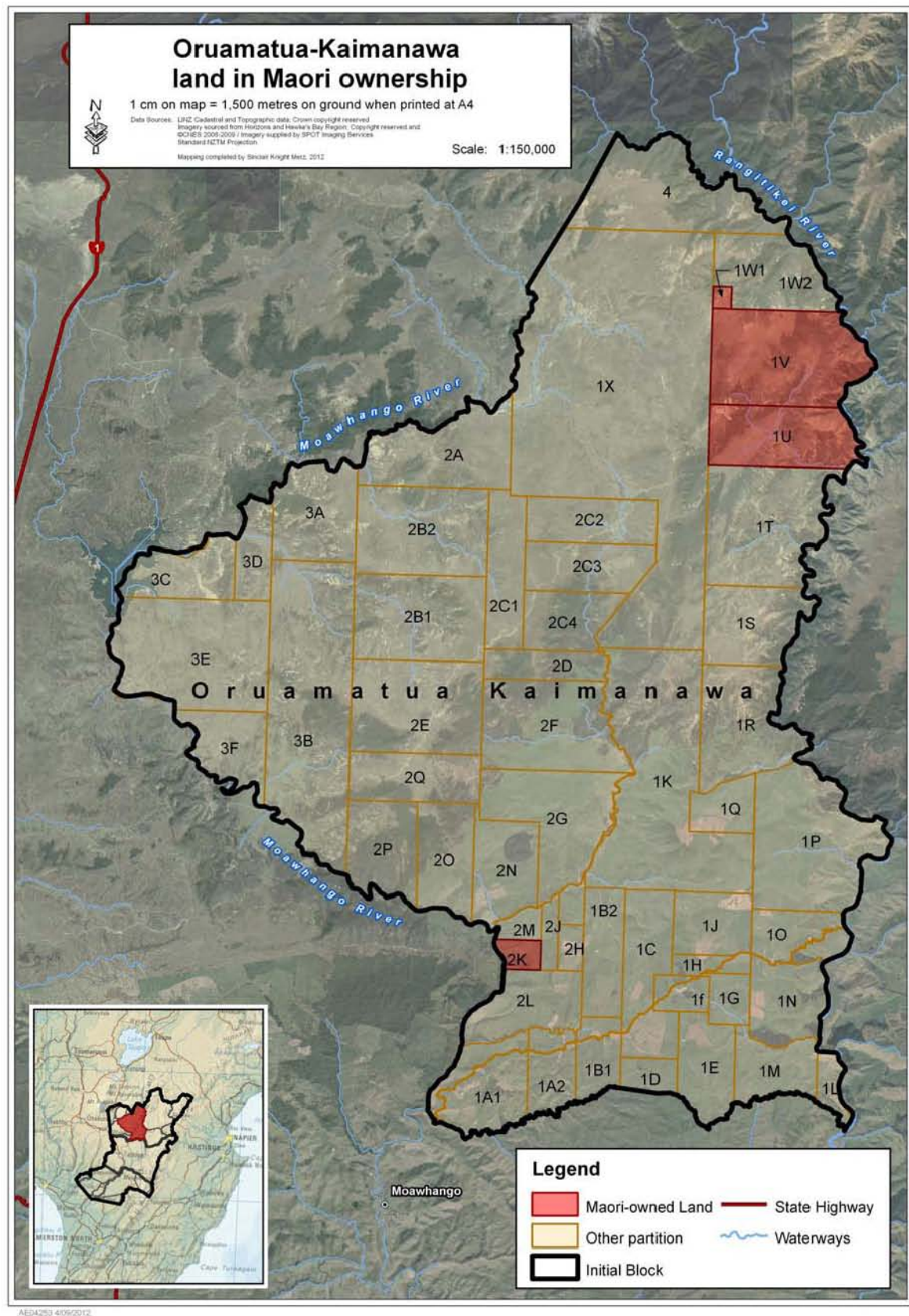






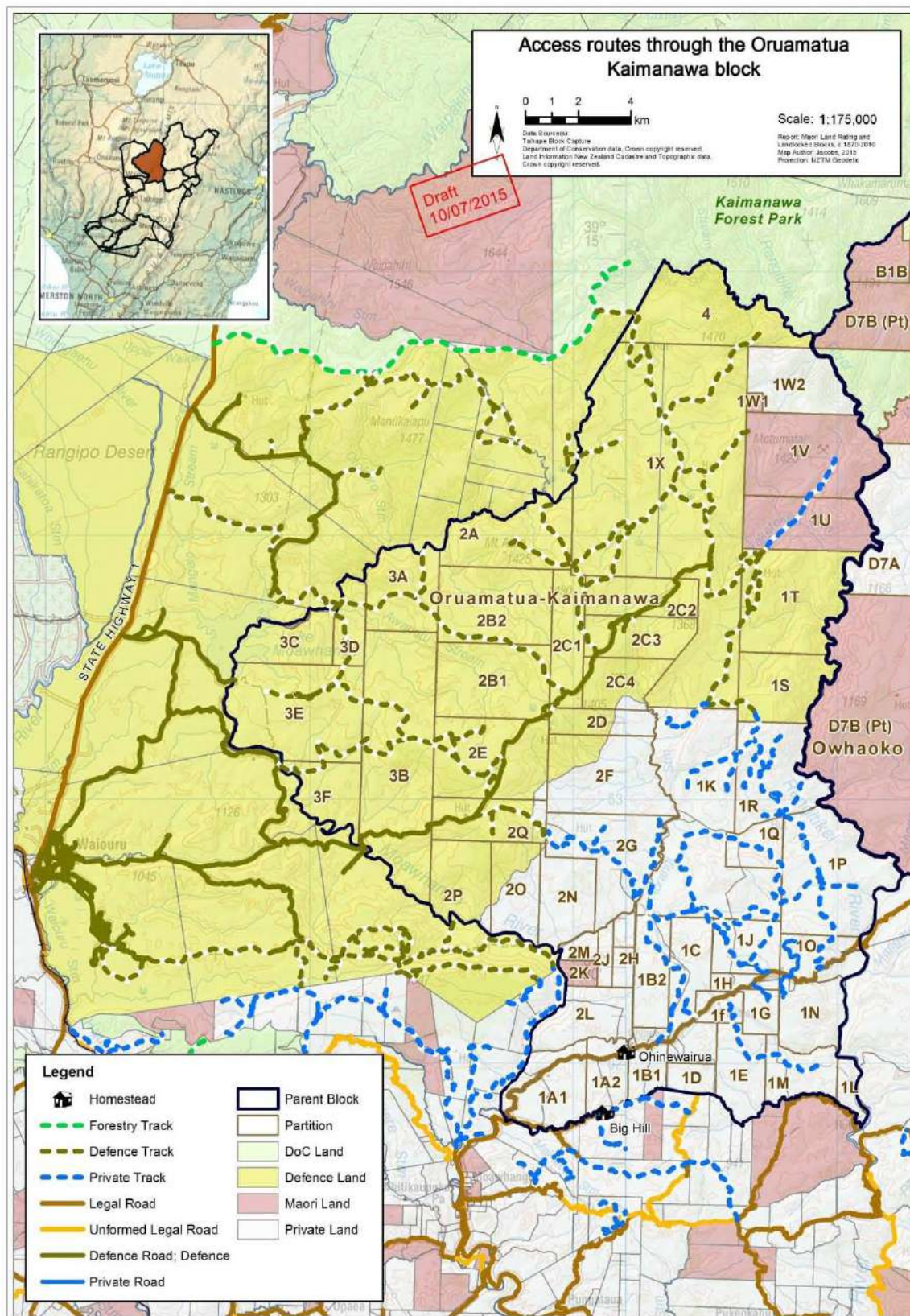
### Map 12: Oruamatua–Kaimanawa Leases





Map 13: Oruamatua-Kaimanawa Land in Maori Ownership Today





Map 9: Access routes through Oruamatua Kaimanawa block