

Mōkai Pātea Waitangi Claims Trust

Hui-a-Rohe Hybrid Hui

16 October 2022

Rata Marae & Webinar

11 am - 12 pm

Overview

- Mihi / Welcome
- Housekeeping
- Update from previous hui a rohe (14 August 2022)
- Waitangi Tribunal hearings update
- Settlement Negotiations update
- Q&A Session - Questions using the Q&A button and the Webinar

Housekeeping

1. Attendance register (online and a tinana)
2. Multiple attendance through the one registration? Please use the Q&A button and list the names of whanau attending with you, their hapū/iwi if different to yours).
3. Webinar is recorded, the presentation part of the webinar (video) and a pdf of the presentation made available on website. Website address:
<https://mokaipateaclaims.maori.nz/documents/>
4. No videoing, sharing through live feeds.
5. No permission for anyone external to MPWCT recording this hui or the use of screen shots for sharing.

Breaching either points 4 or 5 will see you removed from the online meeting and may prevent your participation in future meetings.

Hui process

- Apologies (Online use Q&A)
- MPWCT team (BOT & Negotiators)
- Presentation, followed by Q & A session
- Use the Q & A button to type your Questions
- Online queries will be presented to the Panel at the **end** of the presentation.
- The hui will close at 12 pm
- Panelists Barbara Ball Deputy Chairperson, Tama Potaka Negotiator

Mōkai Pātea Waitangi Claims Trust

Trustees

- ▶ Ngāti Whitikaupeka - Barbara Ball, Te Rina Warren
- ▶ Ngāti Tamakōpiri - Hari Benevides, Moira Raukawa-Haskell
- ▶ Ngāi Te Ohuake – Maraea Bellamy, Robert Martin
- ▶ Ngāti Hauiti - Utiku Potaka, Peter Fraser
- ▶ Tumu Mōkai – Vacant

Management Team

- ▶ Programme Manager – Lavinia Jacobsen
- ▶ Strategic Advisor – Richard Steedman
- ▶ Legal Advisor – Leo Watson
- ▶ Administration Services – Contract with Mōkai Pātea Services (MPS)

Mōkai Pātea Waitangi Claims Trust

Negotiations Team

Appointed November 2021

- ▶ Che Wilson
- ▶ Richard Steedman
- ▶ Tama Potaka
- ▶ Piki Te Ora Tracey Hiroa

MPWCT Trusteeship

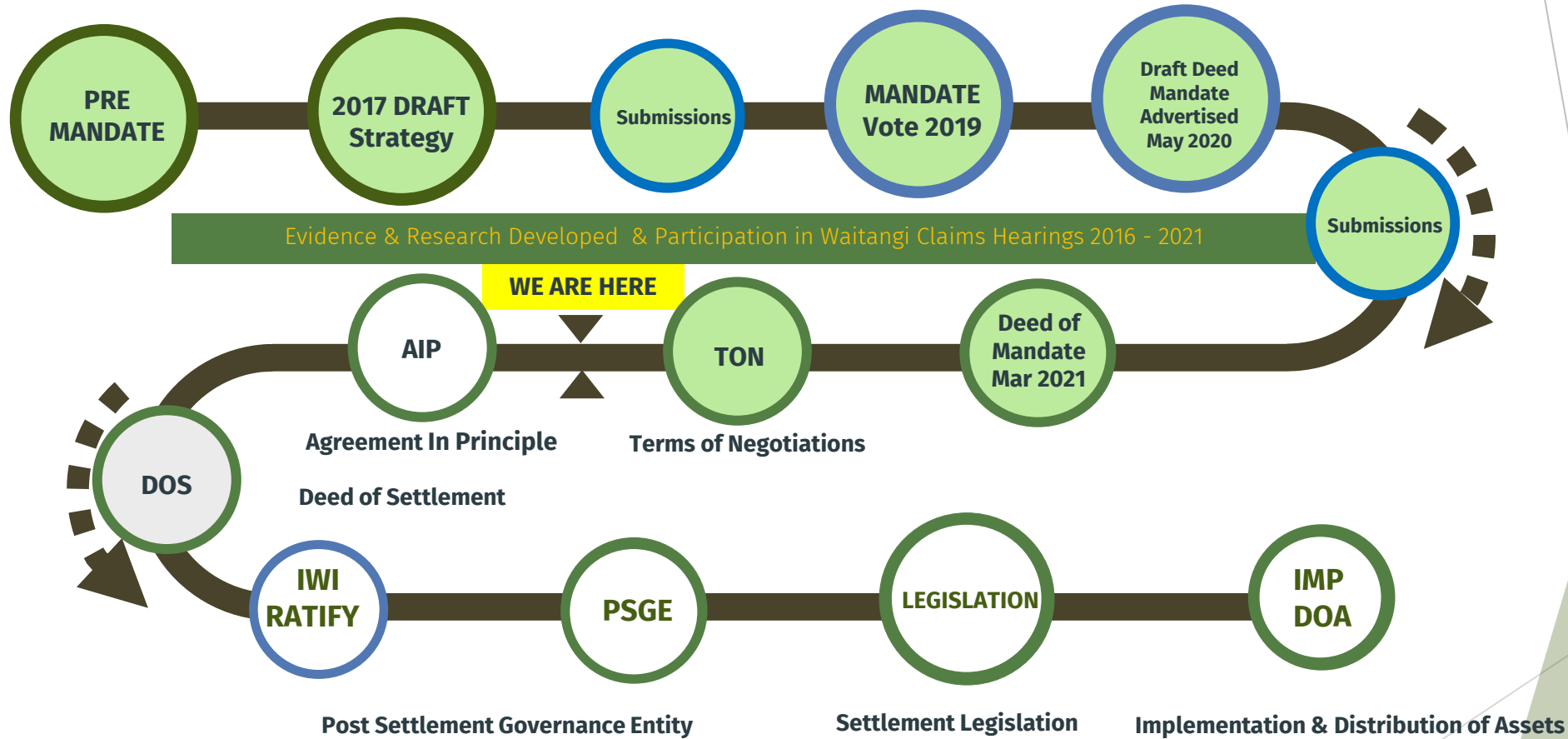
- ▶ Trustees confirmed in 2019
- ▶ Each Trustee serves a term of 4 years
- ▶ Rotation of one Trustee from each iwi made after 2 years
- ▶ Existing Trustees eligible to be re-appointed

NOTE: 2023 Phase II Rūnanga delegate elections for hapū seats

Waitangi Tribunal claims update

- Hearing's process concluded October 2021
 - No decision yet on Gwavas/Kaweka
- Tribunal write their report
 - Tribunal **may** release an early Landlocked Lands report in the next few months

DIRECT NEGOTIATIONS ROADMAP



Iwi Support to Negotiators

- Marae - ToWN Ministers visit in March
- Wānanga - Identification of Crown Lands potentially available for Negotiation
- Research - Identification of shared interests in adjoining land blocks which are not part of the 'core' Mōkai Pātea claims
- Research - Development of a comprehensive land ownership register of tupuna from the 1800's
- Rūnanga - reviewing Trust charter which outlines general principles of the distribution of assets and/or financial returns from settlement

Negotiators Summary

- Developed Narrative & Framework for Negotiations - Te Ara A Pohokura
- Negotiations hui
- Ministers Visits - of ToWN and CCN visit to rohe March and MoD & CCN
- MPs connected with Mōkai Pātea in Wellington May 2022

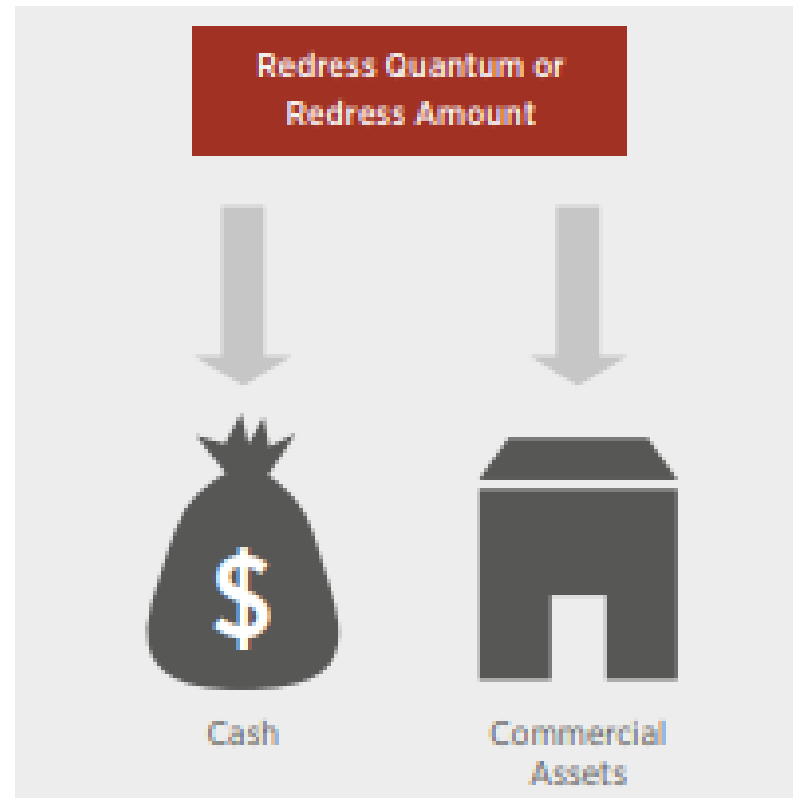
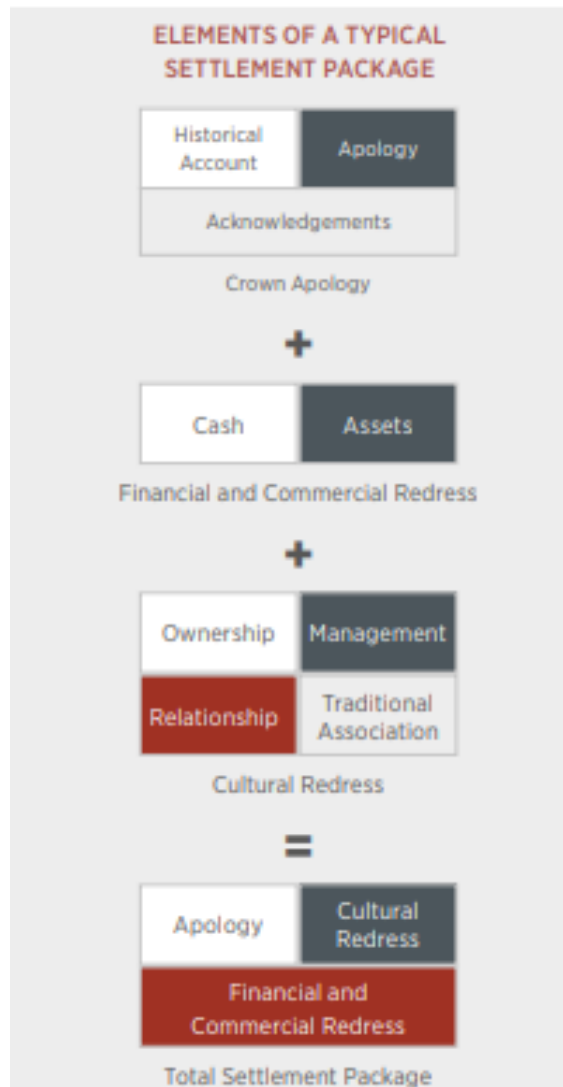
MPWCT Negotiating Team appointed

- Che Wilson
- Richard Steedman
- Tama Potaka
- Tracey Hiroa
- Appointed Nov 2021

Crown Chief Negotiator

- Katherine Gordon (Resigned February 2022)
- Glenn Webber (Resigned 10 March 2022)
- David Tapsell 1 April 2022)

Redress

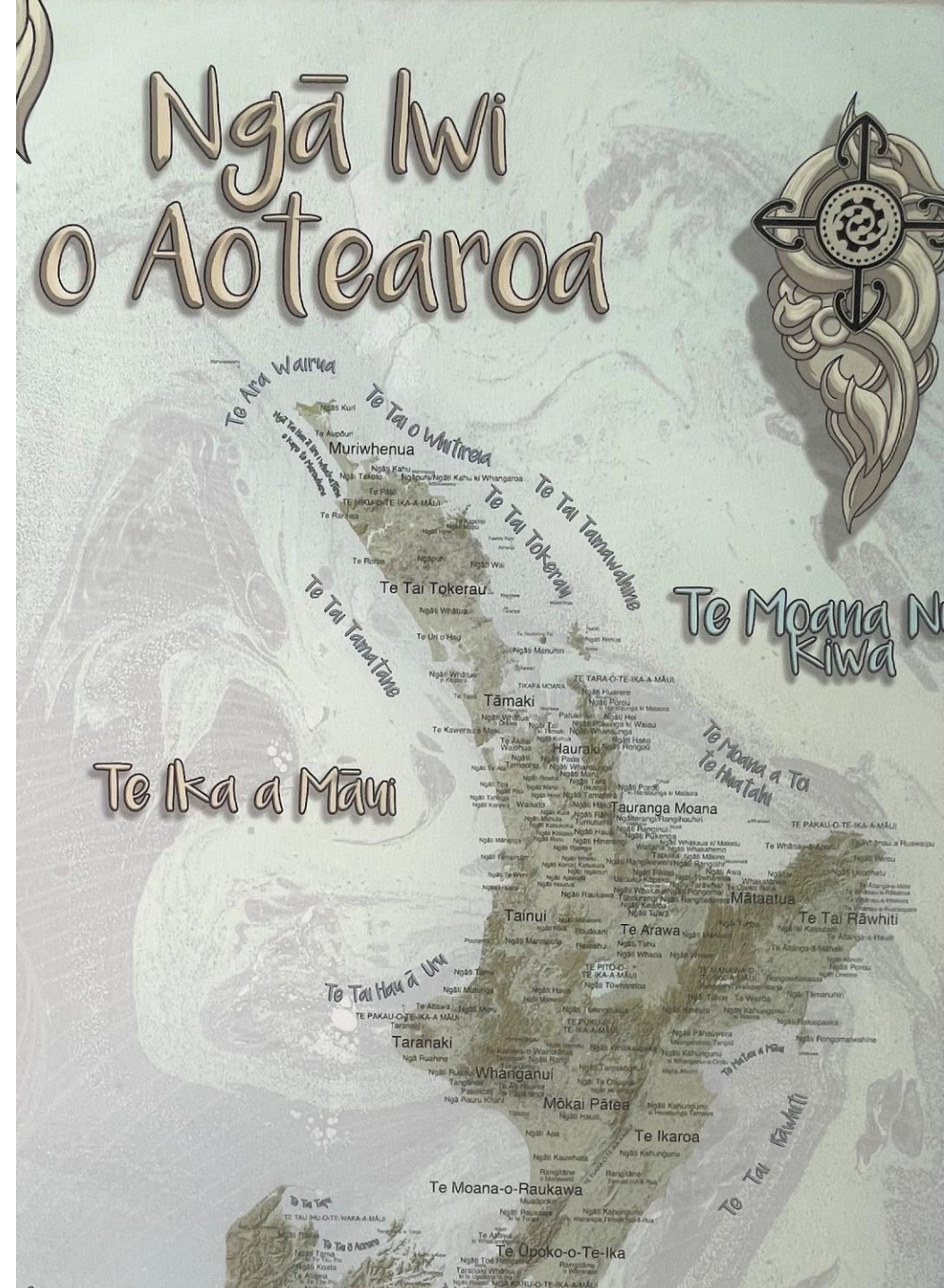


Quantum does not include:

- Redress Gifted by the Crown i.e Wāhi tapu
- Rights & Processes such as RFR
- Claimant Funding

Population

- ▶ Our Mōkai Pātea population figures are steadily increasing in terms of the census and our own databases.
- ▶ However, the loss of identity over decades has led to a lack of knowledge among our people about who we are, and how we whakapapa and affiliate to Mōkai Pātea.
- ▶ Inappropriate for negotiations with the Crown to be undertaken with a disproportionate focus on population, when our population records has been so severely impacted by Crown policies, acts and omissions.



Te Ara a Pohokura



Karakia/Mihimihi/Waiata

Ka puta, ka ora e

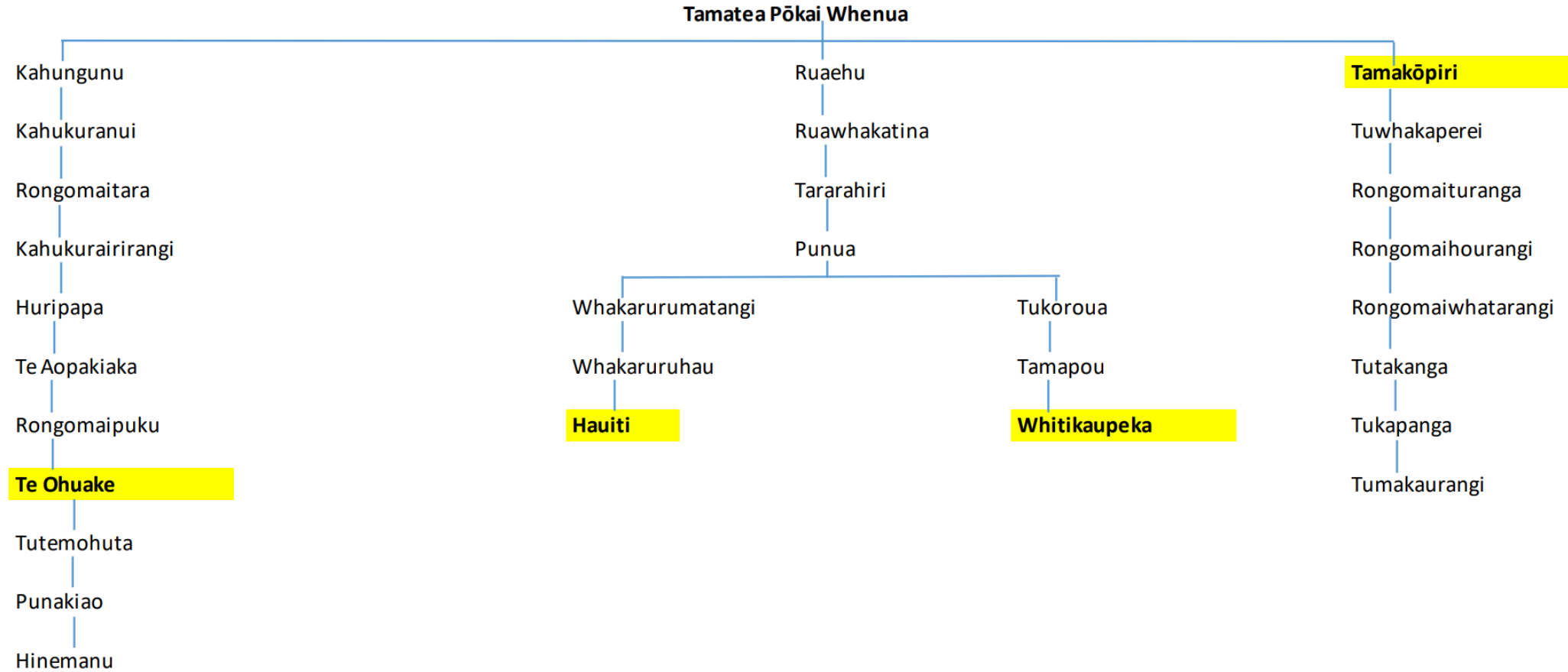
Te Iwi Roa o te motu

Ko Mōkai Pātea

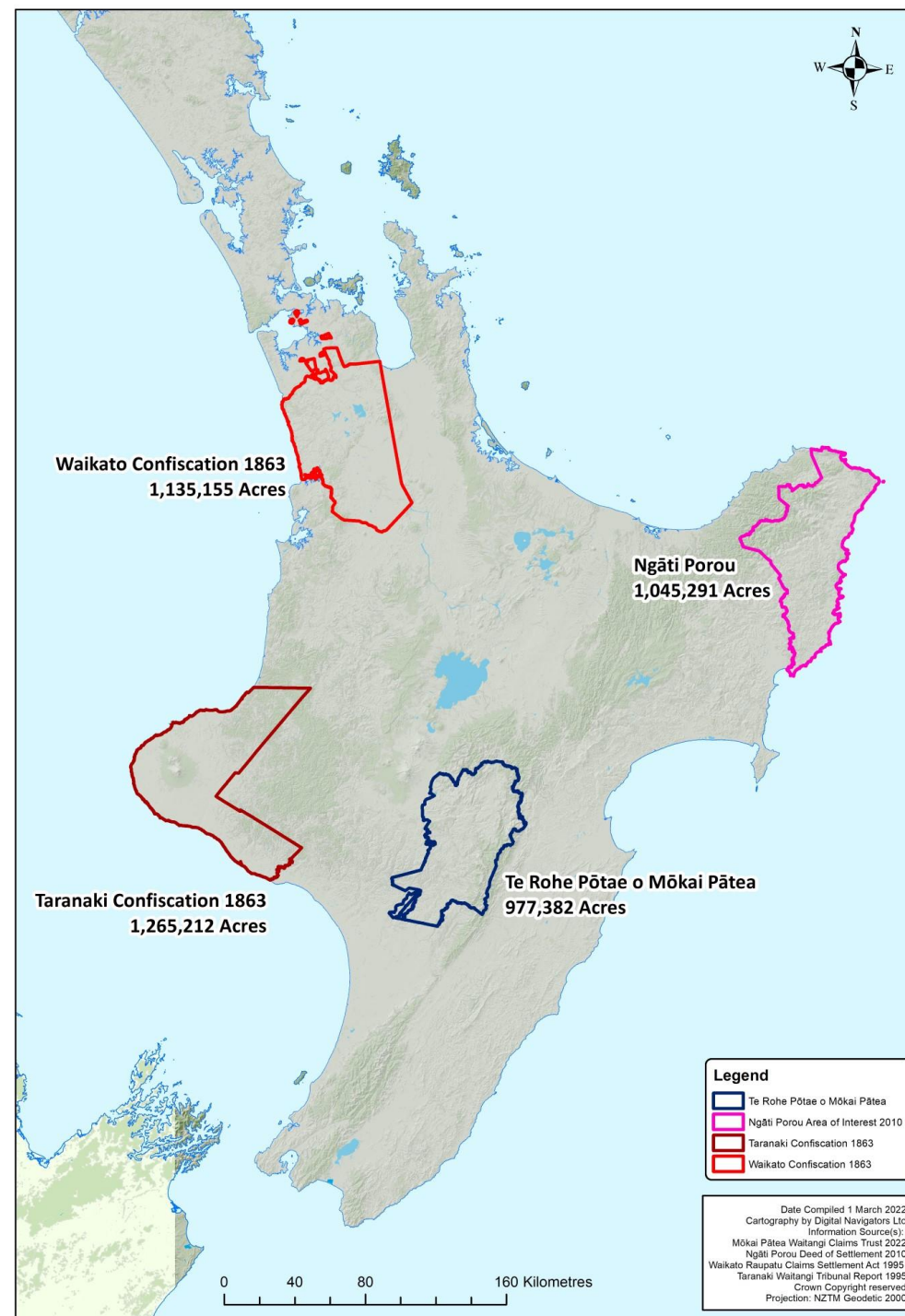
Hei hinu i te ao nei

Ka puta, ka ora e

Mōkai Pātea Nui Tonu Whakapapa Lines



Mōkai Pātea Rohe



Mōkai Pātea

TE TAUMATA – OUR ASPIRATION

Te Iwi Roa o te motu hei hinu mō te katoa

Our strategic location results in benefits for all

TE WHĀINGA – OUR GOAL

He utu hara hei hinu i te whenua o Mōkai Pātea nui tonu

The Settlement is a platform for long term sustainability

NGĀ MĀTĀPONO – OUR VALUES

PĀTEATANGA: We are honest, act with integrity and are free and frank

NGĀRARATANGA: We are open to and embrace innovative solutions to a settlement

NGĀKAUTANGA: At the end of this process, we are well, and all relationships have improved

Treaty Activation

Unique Characteristics

- Kawanatanga: Unlawful assumption of authority
- Rangatiratanga & Taonga: Promised, not delivered
- Partnership: Commitment to nation building not reciprocated
- Citizenship: Disparity of treatment

The owners and extent of their flocks of Sheep now depastured on the said Blocks are Shewn hereunder.

Ani Parli	16 000 Sheep
Sutherland & Taiuru	14 000 "
Te Rina Pine	7 000 "
Batley & Paerau	6 000 "
Hoera Te Rangō	5 000 "
Erueti Orani	5 000 "
Wairaki Te Rangō	8 000 "
Boyd & Anaru Te Wairaki	2 500 "
Pine Makau	4 000 "
Paurini	1 500 "
Eruini	1 200 "
Tawhi	7 000 "
Hay 10. Others in small lots	2 500 "
Henare Kēpa	7 000 "
Kingi Topia	4 000 "
Beni Whakakere	3 500 "
Toia Ngaraui	2 000 "
Pirinika	1 000 "
Hau Paimarire	2 000 "
Onewa	3 000 "
Tawaki	1 000 "
Kumeroa	5 000 "
Winiata Te Whaaro	8 000 "
Irirama Ngahau	2 000 "
Hoti Tanguru	1 000 "
Te Maari	2 000 "

107,200

Nukarau - Unique Characteristics

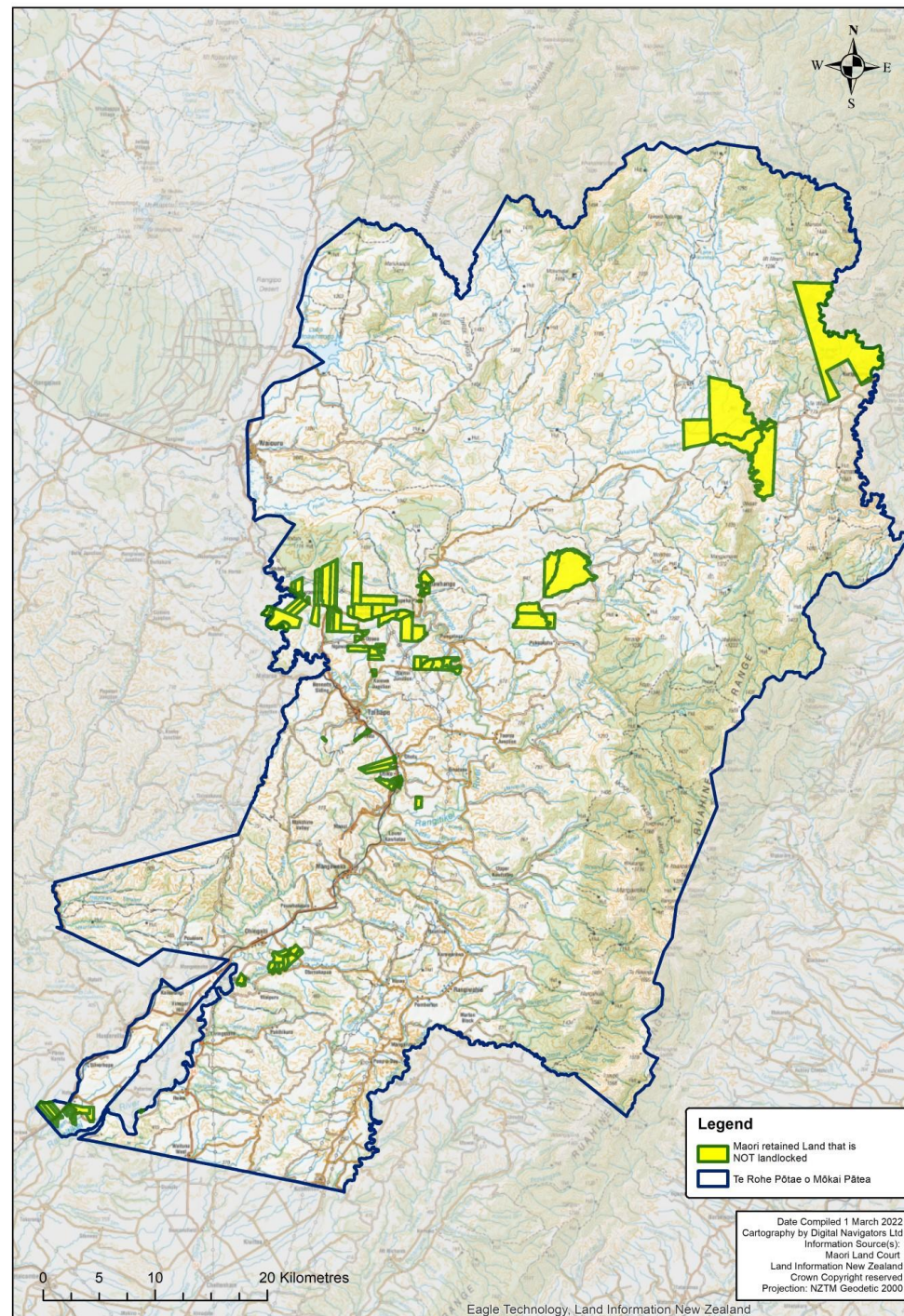
Te Iwi Roa

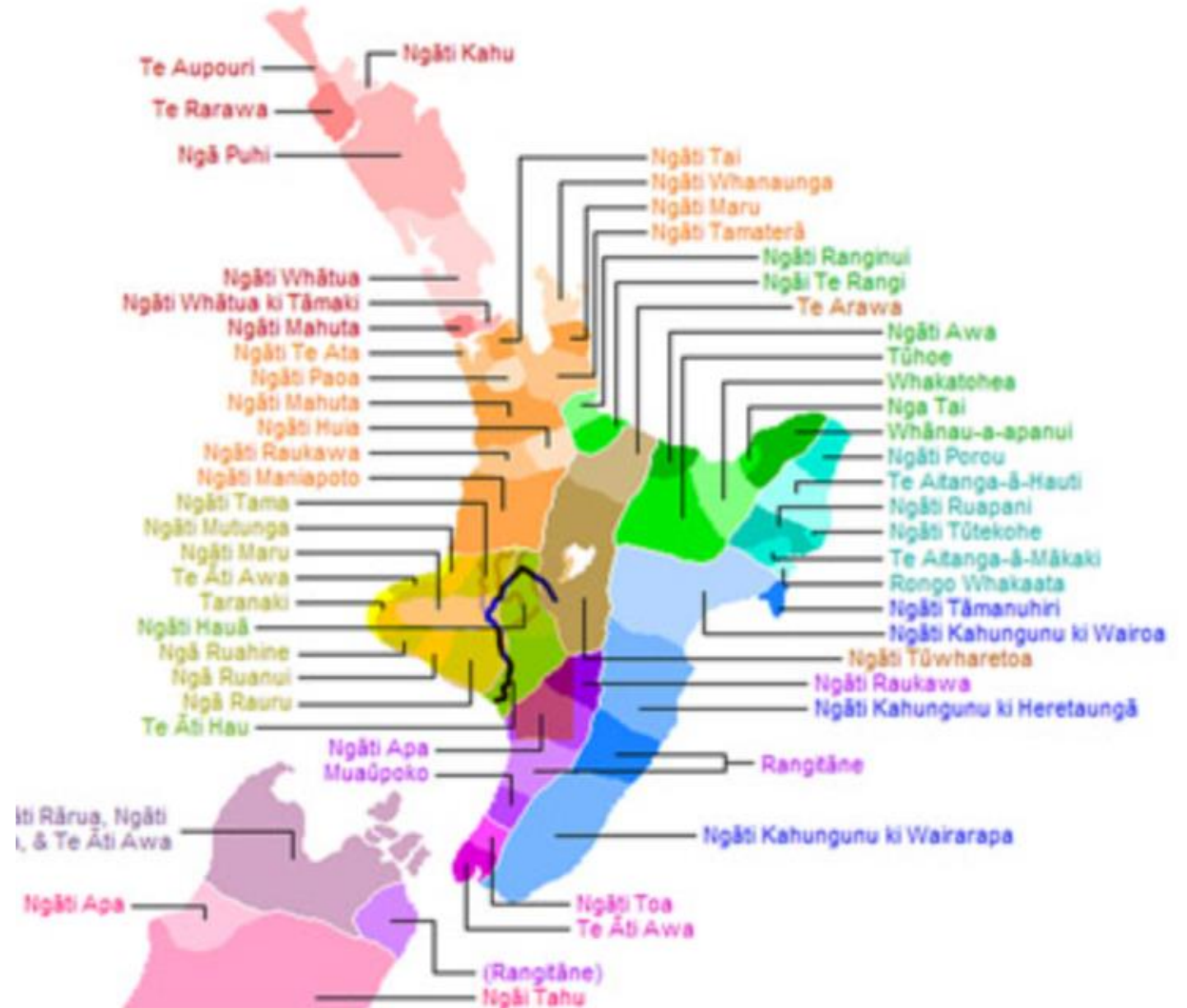
- Ancestral Corridor
- Nation's Backbone, Strategic location
 - NIMT
 - SH1
 - NZDF
 - Lake Moawhango & Tongariro Power Scheme
 - Climate Change offset
 - Biodiversity and conservation
- Partnership & Service to the Nation

Nukarau - Unique Characteristics Te Hinu

- Loss of Land / Land Locked Lands
- Resource Depletion / Mahinga kai
- Loss of Identity
 - Population, Social, Cultural, Economic Impacts
- Loss of Reo
- Raupatu - Pokopoko / Pouwhakarua
- Rangitīkei & Ngaruroro & Waterways & Catchments

Mōkai Pātea Retained Accessible Maori Land





Service

Ka Tirotiro ki Te Onetapu

65k hectares

Raupatu elements

Service to Nation - Security

Kaitiakitanga



Our Guiding Poupou

MŌKAI PĀTEA – Connection to place.

MŌKAI NGĀRARA – Ability to tap into our superpowers as uri of Pohokura.

MŌKAI TE NGĀKAU – Cultural narratives that help us fall in love with who we are.



*Hau mai i Waitapu
Ō mai i te taumata o Ruahine
Piri mai i Hautapu
Whiti mai i Ngaruroro
Ko Te Iwi Roa
Ko Mōkai Pātea*



Karakia/Mihimihi/Waiata

Ka puta, ka ora e

Te Iwi Roa o te motu

Ko Mōkai Pātea

Hei hinu i te ao nei

Ka puta, ka ora e

Q&A Session

- Questions using the Q & A button for questions to the panel.
- A copy of this presentation and webinar in video format available on Website by end of next week.
- <https://mokaipateaclaims.maori.nz/documents/>
- Check your whanau are registered. Register online
- <https://members.mokaipateaclaims.maori.nz/>