

Mōkai Pātea Waitangi Claims Trust

Hui-a-Rohe Webinar

27 March 2022 Webinar

10 am - 11 am

Overview

- Mihi / Welcome
- Housekeeping
- Update from previous hui a rohe (18 December 2021)
- Waitangi Tribunal hearings update
- Settlement Negotiations update
- Q&A Session - Questions using the Q&A button and the Webinar Facilitator (Lavinia) will put the questions to the panel.

Housekeeping

1. Attendance register (online and a tinana)
2. Multiple attendance through the one registration? Please use the Q&A button and list the names of whanau attending with you, their hapū/iwi if different to yours).
3. Webinar is recorded, the presentation part of the webinar (video) and a pdf of the presentation made available on website
4. No videoing, sharing through live feeds.
5. No permission for anyone external to MPWCT recording this hui or the use of screen shots for sharing.
6. Presentation slides will be made available on website
<https://mokaipateaclaims.maori.nz/documents/>

Breaching either points 4 or 5 will see you removed from the online meeting and may prevent your participation in future meetings.

Hui process

- Presentation, followed by Q & A session
- Use the Q & A button to type your Questions
- Online queries will be presented to the Panel at the **end** of the presentation.
- The hui will close at 11 am
- Panelists Utiku Potaka MPWCT Chair, Negotiators

Waitangi Tribunal claims update

Week	Venue/Date	Our Focus
KTI	Rātā / Moawhango (Sep 2016)	Korero Tuku Iho
1	Rātā (March 2017)	Tino Rangatiratanga
2	Palmerston North (May 2017)	Rangitikei Awa
3	Taihape (Oct 2017)	Ngāti Whitikaupeka
4	Winiata (Dec 2017)	Ngāi Te Ohuake/Ngāti Paki
5	Rātā (Mar 2018)	Ngāti Hauiti
6	Opaea/Kaiewe/Moawhango (Apr 2018)	Ngāti Tamakōpiri
7	Winiata (May 2018)	Southern claims
8	Rātā (17-21 Sept 2018)	Remaining claimant evidence
9	Waiouru (18-21 Mar 2019)	Crown evidence #1
10	Waiouru (4-8 Nov 2019)	Crown evidence #2
11	Moawhango (18-21 Nov 2019)	Landlocked land
12	Omahu (17-20 Feb 2020)	Gwavas/Kaweka
13	Winiata (2-6 Nov 2020)	Claimant Closings & Generic Closing
14	Rata (26-28 Jan 2021)	Crown closings on landlocked land
15	Wellington (1 Apr 2021)	Crown Landlocked Land Tranche 2
16	Rata (10-11 Aug 2021)	Crown Generic Closing
17	Wellington (4 Oct 2021)	Claimant response to Crown Closing

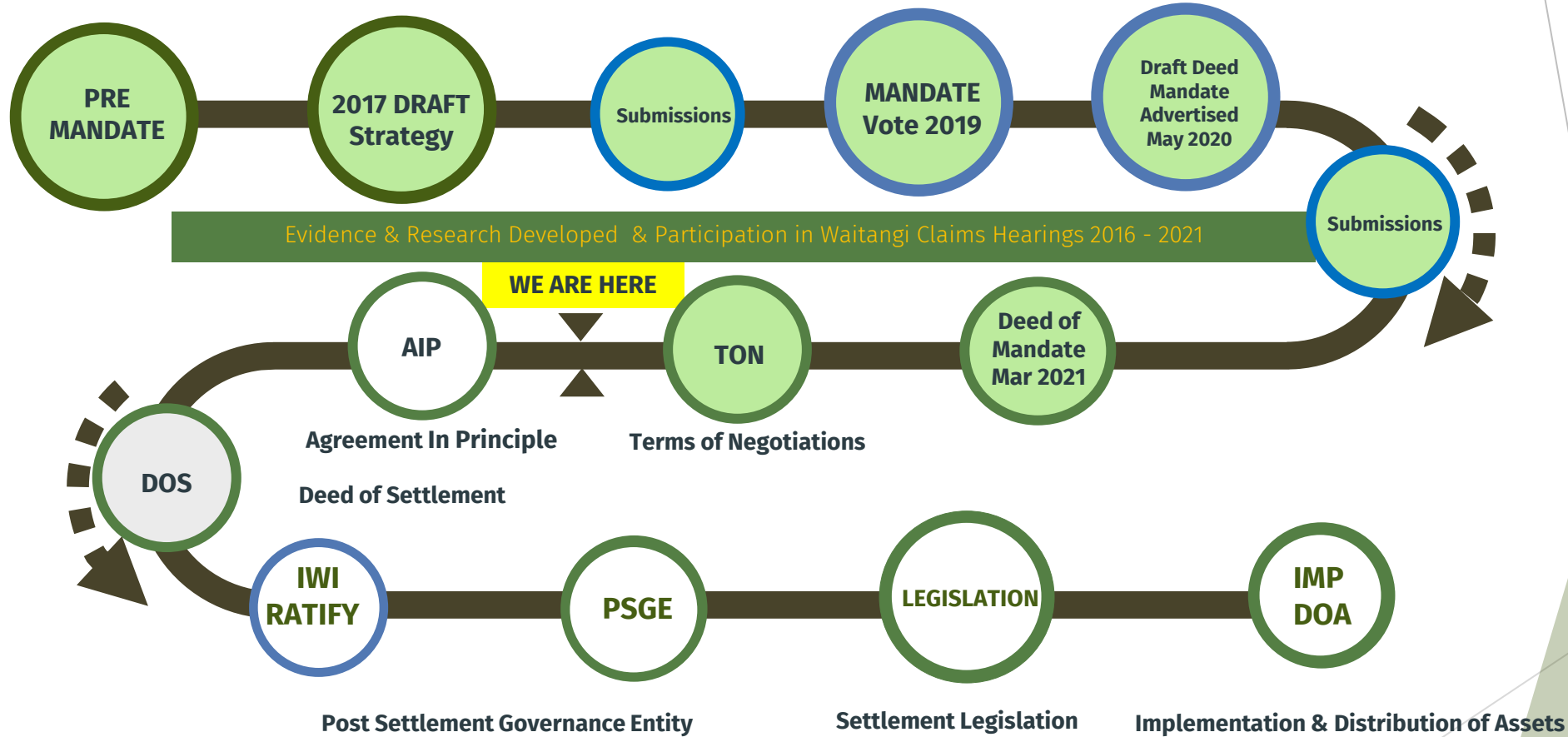
Waitangi Tribunal claims update

- Hearing's process concluded
- Tribunal write their report
 - Tribunal may release an early Landlocked Lands report

Settlement Negotiations Update

- Pre-Mandate
- Deed of Mandate - recognised by the Crown 17 March 2021
- Terms of Negotiations - Signed 20 September 2021
- **Agreement in Principle (AIP)** (*we are here now)
- Deed of Settlement (DOS)
- Post-Settlement Governance Entity (PSGE)
- Ratification by the Iwi
- Settlement Legislation
- Implementation and Distribution of Assets

DIRECT NEGOTIATIONS ROADMAP



Deed of Mandate Implementation and Maintenance

- Negotiators Recruited
- Commence conversations with
 - Claimant Forum
 - Special Factors
 - Marae

Negotiators

- Developing Narrative & Framework for Negotiations
- Engagement with Crown & Claimants
- Negotiations Hui
- Minister of ToWN and CCN visit to rohe

MPWCT Negotiating Team appointed

- Che Wilson
- Richard Steedman
- Tama Potaka
- Tracey Hiroa

Crown Chief Negotiator

- Katherine Gordon (Resigned February 2022)
- Glenn Webber (Resigned 10 March 2022)
- To be appointed



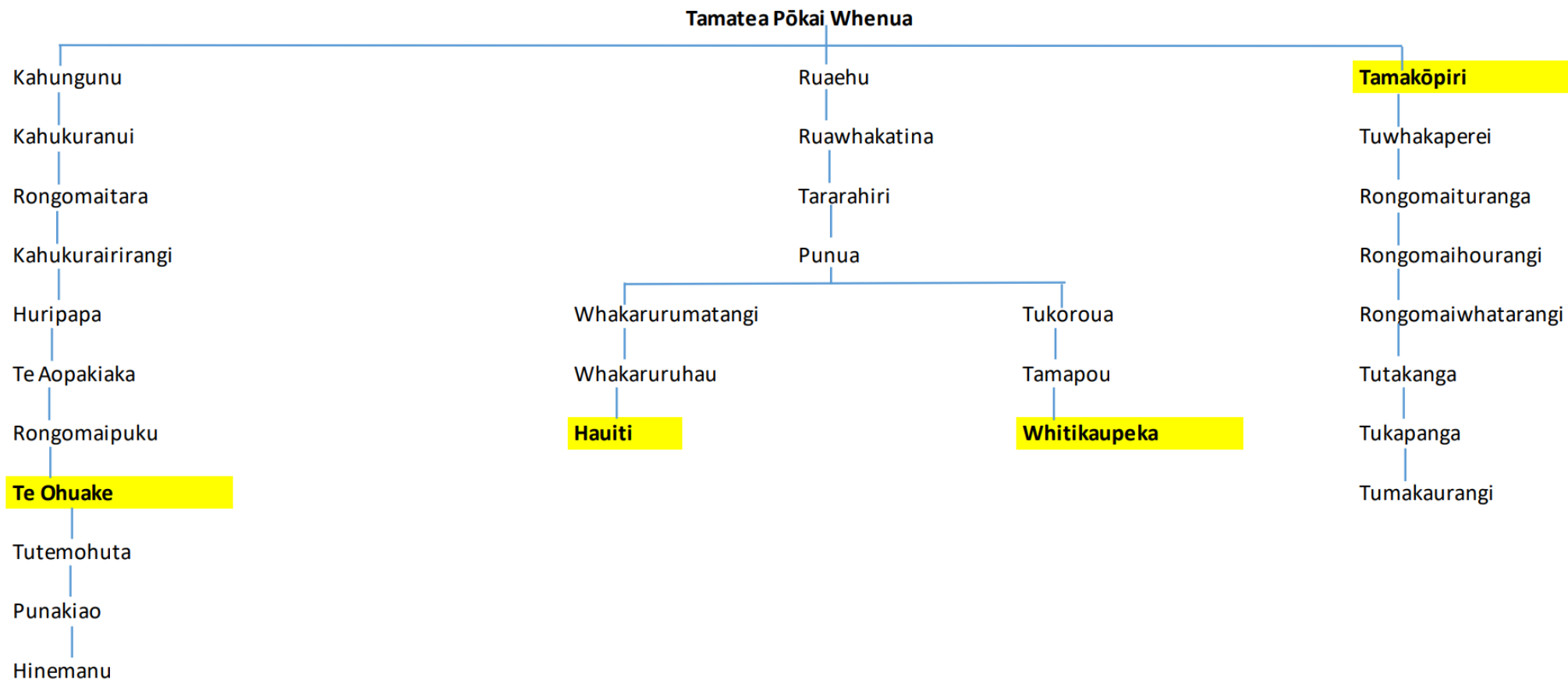
Te Ara A Pohokura

Waiata

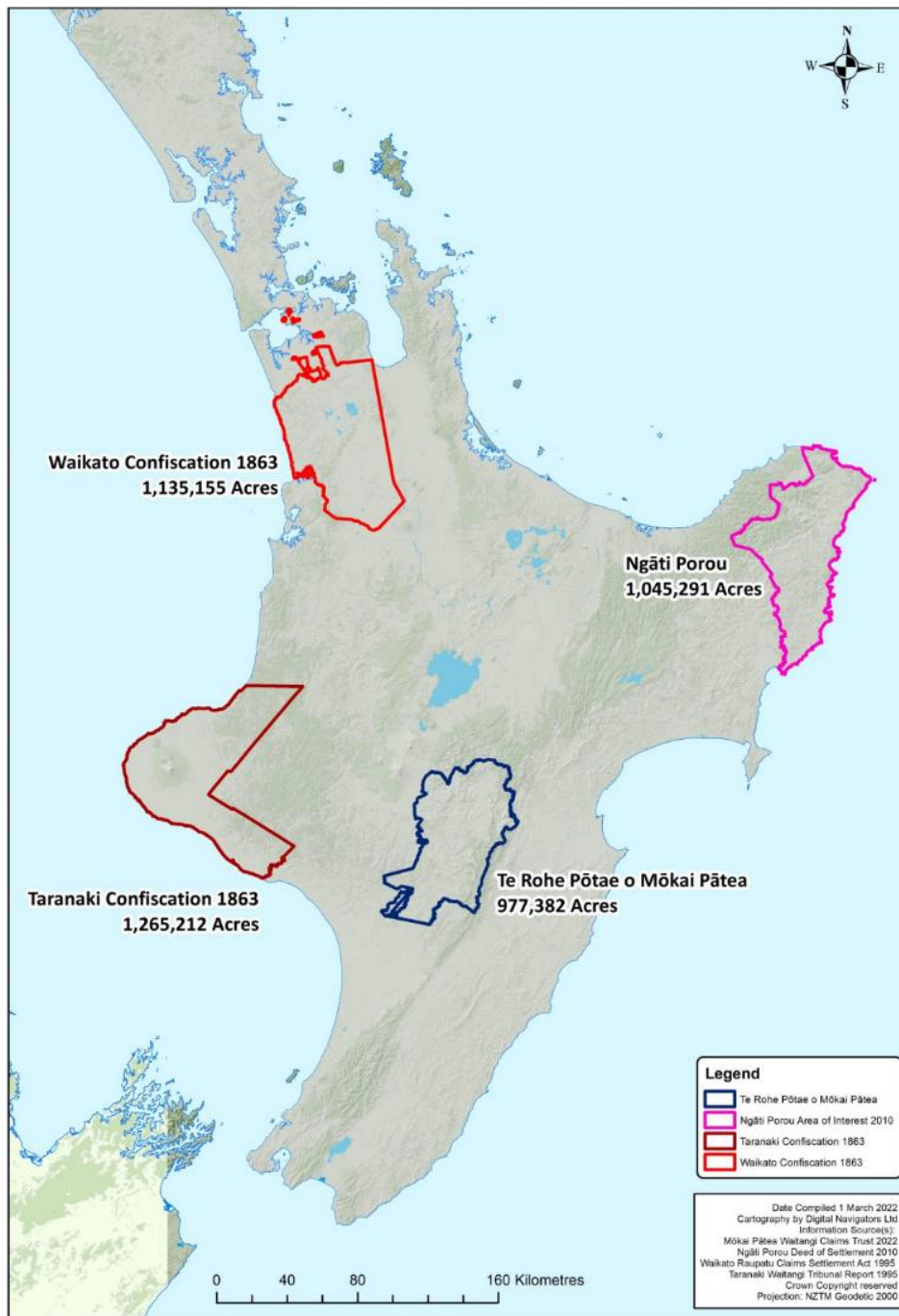
Ka puta, ka ora e

Te Iwi Roa o te motu
Ko Mōkai Pātea
Hei hinu i te ao nei
Ka puta, ka ora e

Mōkai Pātea Nui Tonu Whakapapa Lines



Mōkai Pātea Rohe



Mōkai Pātea

TE TAUMATA - OUR ASPIRATION

Te Iwi Roa o te motu hei hinu mō te katoa

Our strategic location results in benefits for all

TE WHĀINGA - OUR GOAL

He utu hara hei hinu i te whenua o Mōkai Pātea nui tonu

The Settlement is a platform for long term sustainability

NGĀ MĀTĀPONO - OUR VALUES

PĀTEATANGA We are honest, act with integrity and are free and frank

NGĀRARATANGA We are open to and embrace innovative solutions to a settlement

NGĀKAUTANGA At the end of this process, we are well, and all relationships have improved

Our Guiding Pou pou

MŌKAI PĀTEA – Connection to place.

MŌKAI NGĀRARA – Ability to tap into our superpowers as uri of Pohokura.

MŌKAI TE NGĀKAU – Cultural narratives that help us fall in love with who we are.



Treaty Activation – Unique Characteristics

- Kawanatanga: Unlawful assumption of authority
- Rangatiratanga & Taonga: Promised, not delivered
- Partnership: Commitment to nation building not reciprocated
- Citizenship: Disparity of treatment

12276

The owners and extent of their flocks of Sheep now depastured on the said Blocks are Shewn hereunder.

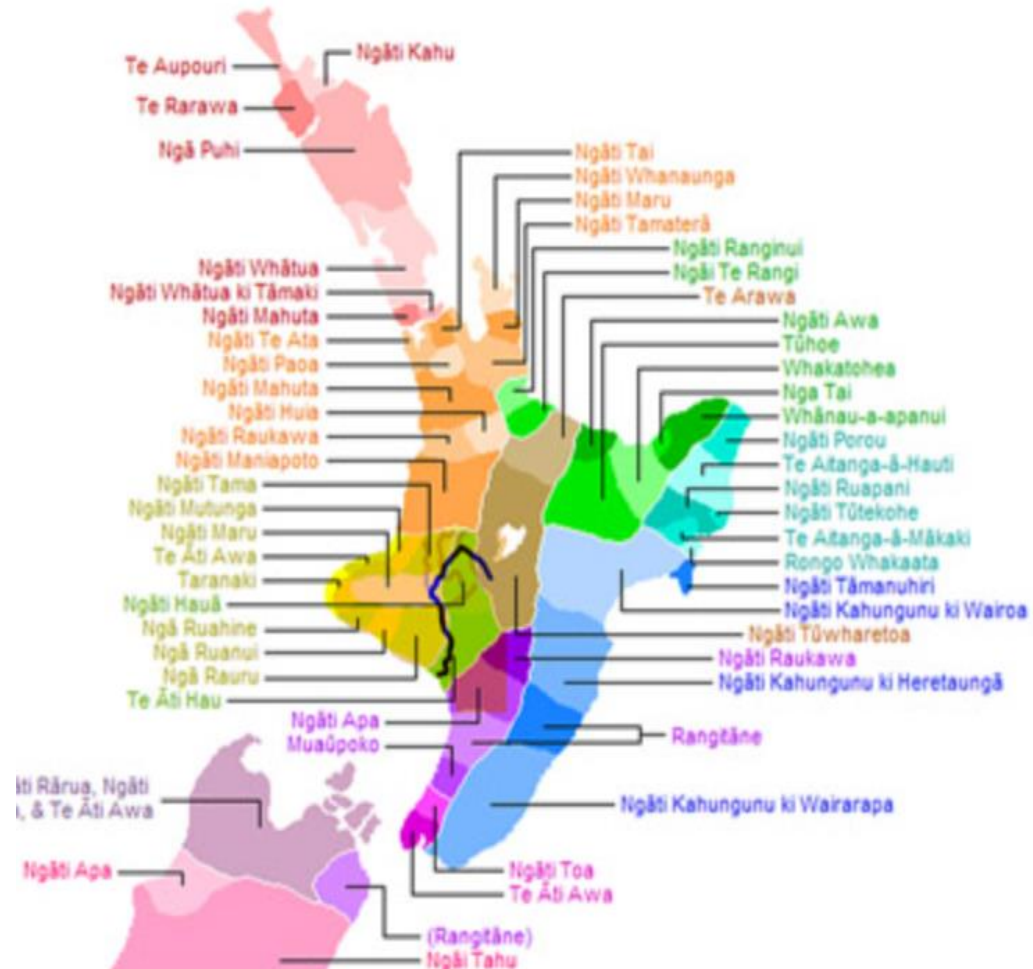
Ani Paki	16 000 Sheep
Sutherland & Taiuru	14 000 "
Te Rina Pine	7 000 "
Batley & Paerau	6 000 "
Hoera Te Rango	5 000 "
Erneti Orani	5 000 "
Wairaki Te Rango	8 000 "
Boyd & Anara Te Wairaki	2 500 "
Pine Makau	4 000 "
Paurini	1 500 "
Erini	1 200 "
Tawhi	7 000 "
4 say 10 others in small lots	2 500 "
Henare Kupa	7 000 "
Kingi Topia	4 000 "
Henri Whakakahi	3 500 "
Toia Ngarami	2 000 "
Piriniha	1 000 "
Rau Paimarire	2 000 "
Onewa	300 "
Tawaki	1 000 "
Kumeroa	500 "
Whiriata Te Whaaro	8 000 "
Irirama Ngahou	2 000 "
Hoti Tangua	1 000 "
Te Maari	2 000 "
	<u>107,300</u>

Nukarau - Unique Characteristics

Te Iwi Roa

- Ancestral Corridor
- Nation's Backbone, Strategic location
 - NIMT & SH1
 - NZDF
 - Lake Moawhango & Tongariro Power Scheme
 - Climate Change offset
 - Biodiversity and conservation
- Partnership & Service to the Nation

Loss of Identity

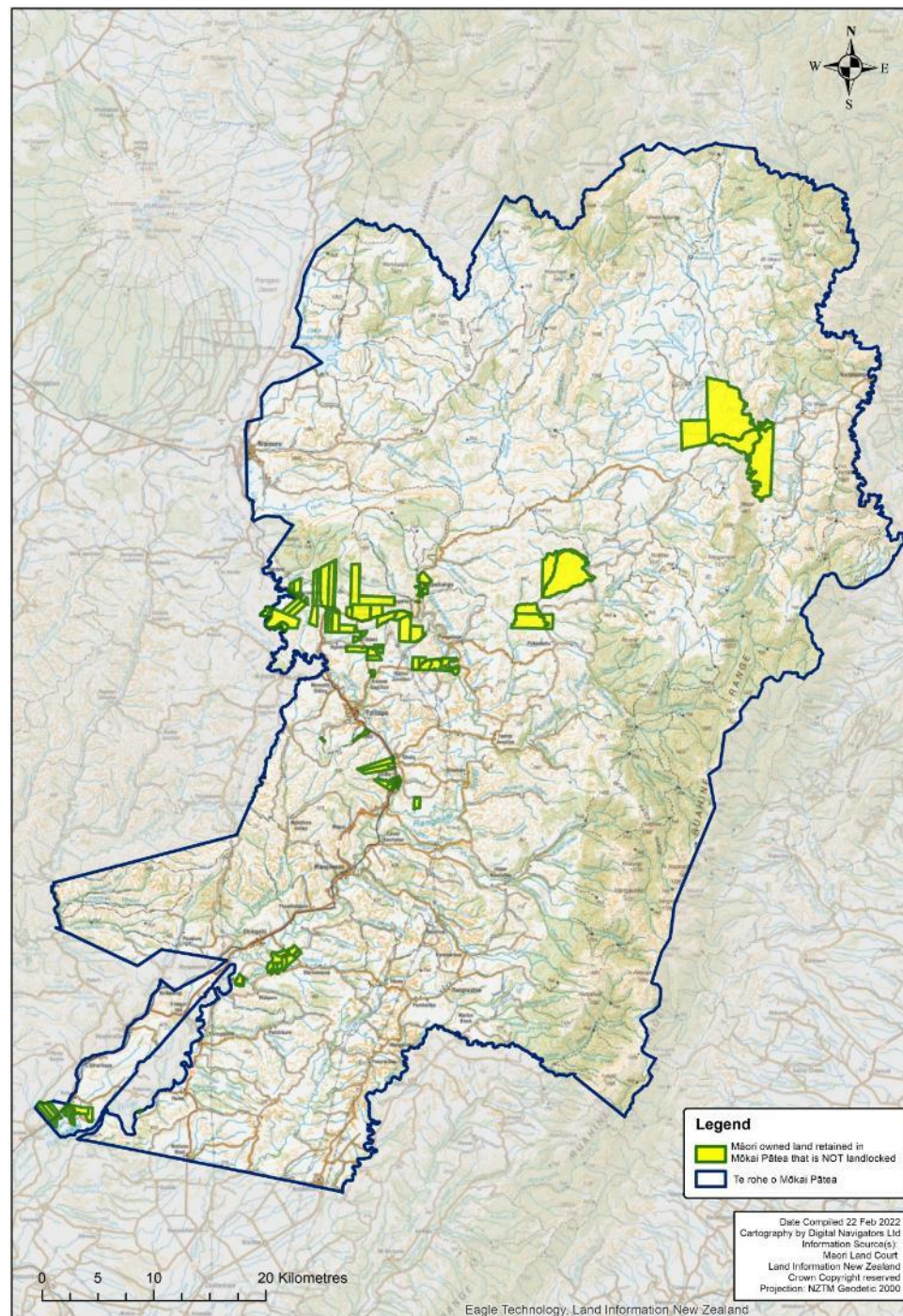


Nukarau - Unique Characteristics

Te Hinu

- Loss of Land / Land Locked Lands
- Resource Depletion / Mahinga kai
- Loss of Identity
 - Population, Social, Cultural, Economic Impacts
- Loss of Reo
- Raupatu - Pokopoko / Pouwhakarua
- Rangitīkei & Ngaruroro & Waterways & Catchments

Mōkai Pātea Retained Accessible Maori Land



*Hau mai i Waitapu
Ō mai i te taumata o Ruahine
Piri mai i Hautapu
Whiti mai i Ngaruroro
Ko Te Iwi Roa
Ko Mōkai Pātea*



Q&A Session

- Questions using the Q & A button for questions to the panel.
- A copy of this presentation and webinar in video format available on Website by end of next week.
- <https://mokaipateaclaims.maori.nz/documents/>
- Check your whanau are registered. Register online
- <https://members.mokaipateaclaims.maori.nz/>